

Flower Pendant

by
Lynda Taylor



Skill Level - Advanced Beginner

BBH

Banjos Bead House

Copyright ©2025 Lynda Taylor - Banjos Bead House All rights reserved.
Tutorial intended for private use by **one individual only**. Commercial or instructional use is strictly prohibited without the express written permission of the copyright holder. You can sell what you make but, no mass production. Do Not make and sell more than 40 items from this pattern. Please, give credit to Banjos Bead House for the design.

Requirements

Beads (per triangle)

30 x Miyuki 11/0 Delica - (A)

14 x Miyuki 11/0 Delica - (B)

24 x Miyuki 11/0 Delica - (C)

41 x Miyuki 11/0 Delica - (D)

42 x Miyuki 11/0 Delica - (E)

57 x Miyuki 11/0 Delica - (F)

11 x Miyuki 11/0 Round - (G)

Tools & Other Required Items

Beading Needle - Size 10 or 12

Thread - Fireline 6lb or S-Lon Fire 4lb

Scissors

Thread Burner

Kolympos - Super Duo Bead Ending
(CYM-SD-012357) x 1

This Flower Pendant is constructed from joining together five or six warped triangle pieces.

Warped triangles are the simplest of the geometric warped shapes you can create using Peyote and Herringbone stitches.

In row 12, we use 11/0 Rounds to create the hinge to use to join the triangles and an additional top row to the triangle. The third side of this row is the zipping row.

I use the size 10 needles to make each triangle and swap to a size 12 needle to zip them together.



Demonstration Videos

Where you see the play symbol there is a demonstration video available - click on it to open in YouTube. There is no sound in these videos, they are a guide to assist, they have not been edited, so you will see parts that are slightly off camera or when Lynda makes mistakes and has tangled threads. All of the videos can be viewed here



Stitches Used

Peyote - an off-loom beading technique, it can be worked with either an even or odd number of beads per row.

Herringbone - a versatile, unique off-loom beading technique. Also known as Ndbele Weave for its use by a South African tribe of the same name, the stitch is characterised by its snakeskin feel and visible chevron pattern.

Instructions - Warped Triangle









Contemporary Geometric Beadwork:

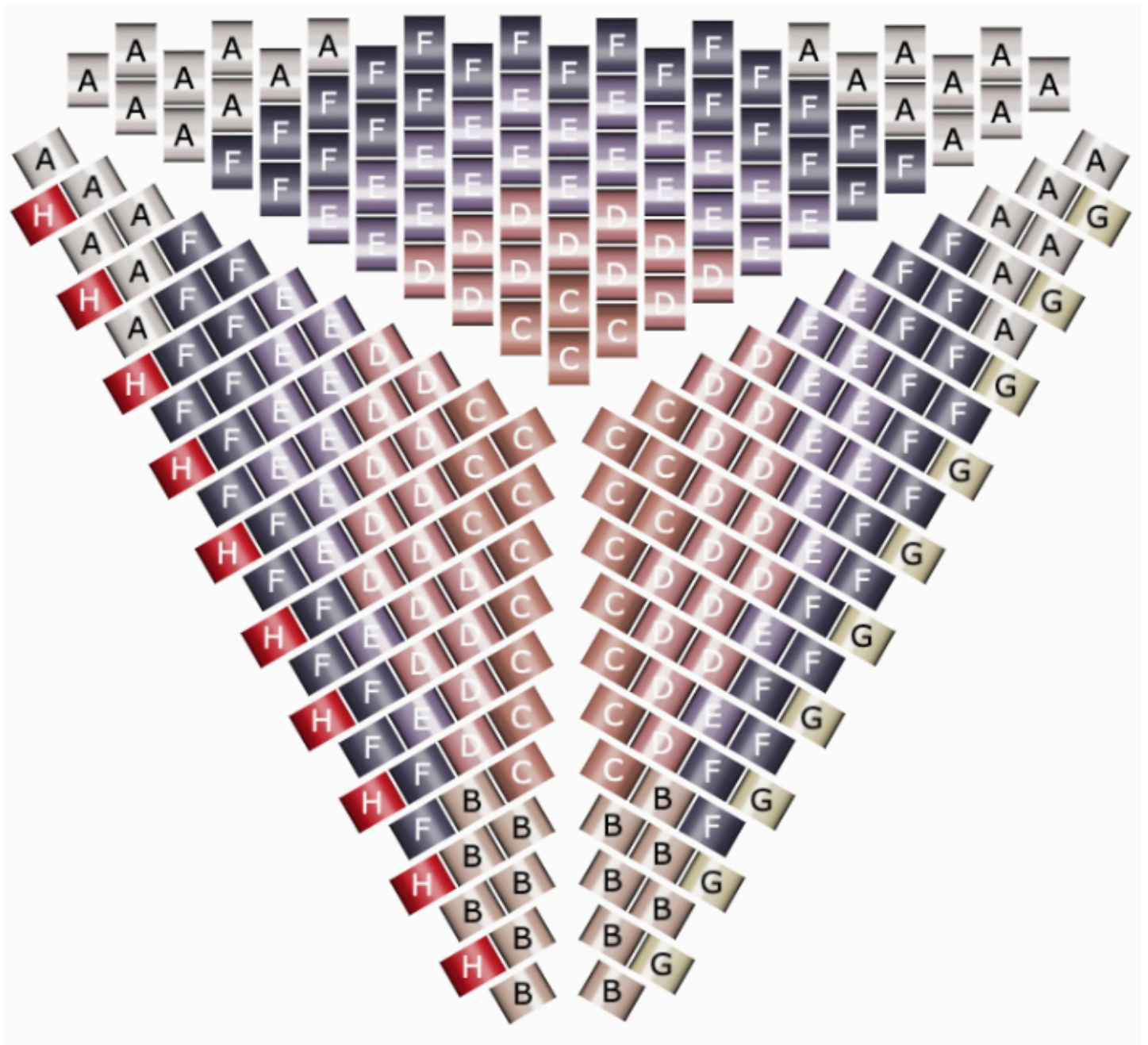
How To Make A Peyote Triangle



Warped Triangle (Petal) Demonstration Video



Color	Description	Symbol
	Silver, Alabaster (DB221)	A
	Pink, Transparent (DB1203)	B
	Orange, Alabaster (DB622)	C
	Pink, Transparent (DB1839)	D
	Purple, Transparent (DB1754)	E
	Purple, Transparent (DB1756)	F
	Silver, Transparent (94201)	G
	Join	H



Instructions - Warped Triangle

Row 1:

(3C)

Row 2:

(2C)

(2C)

(2C)

Row 3:

(2C), 1C

(2D), 1C

(2D), 1C

Row 4:

(2C), 1C, 1D

(2D), 2D

(2D), 1D, 1C

Row 5:

(2C), 3D

(2E), 3D

(2E), 3D

Row 6:

(2C), 3D, 1E

(2E), 1E, 2D, 1E

(2E), 1E, 3D

Row 7:

(2C), 3D, 2E

(2F), 5E

(2F), 2E, 3D

Row 8:

(2B), 3D, 2E, 1F

(2F), 1F, 4E, 1F

(2F), 1F, 2E, 3D

Row 9:

(2B), 1B, 4E, 2F

(2A), 2F, 3E, 2F

(2A), 2F, 4E, 1B

Row 10:

(2B), 1B, 6F, 1A

(2A), 1A, 2F, 2E, 2F, 1A

(2A), 1A, 6F, 1B

Row 11:

(2B), 1B, 6F, 2A

(2A), 2A, 5F, 2A

(2A), 2A, 6F, 1B

Row 12:

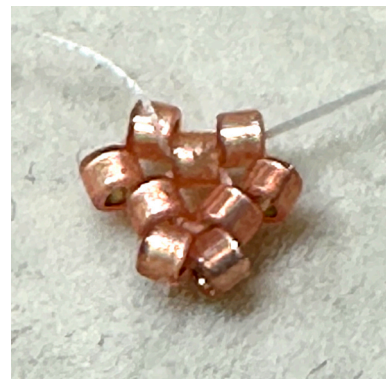
10G

3A, 4F, 3A

Row 1



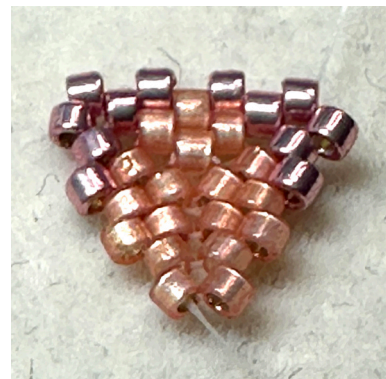
Row 2



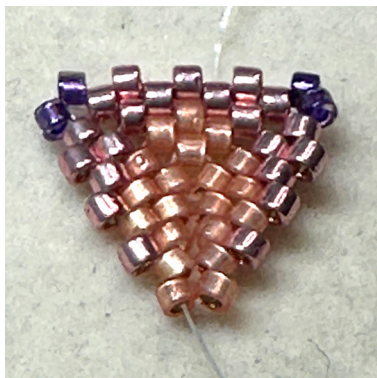
Row 3



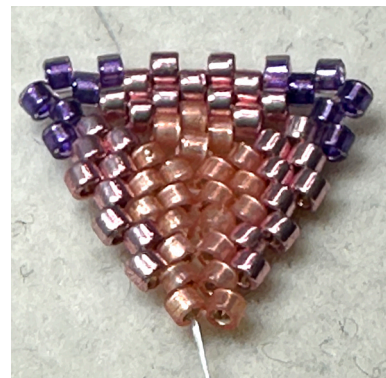
Row 4



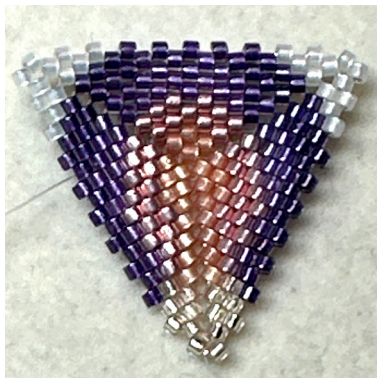
Row 5



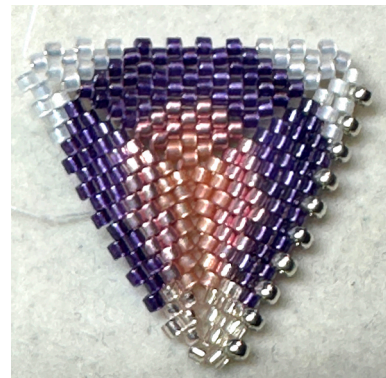
Row 6



Row 11



Row 12



Leave the thread attached to the triangle, it will be used to connect to the next triangle.

Instructions - Joining

Once you have stitched five or six triangles it is time to join them to create the pendant.

The graphic below is an overview of how all six will be stitched together to form the pendant.

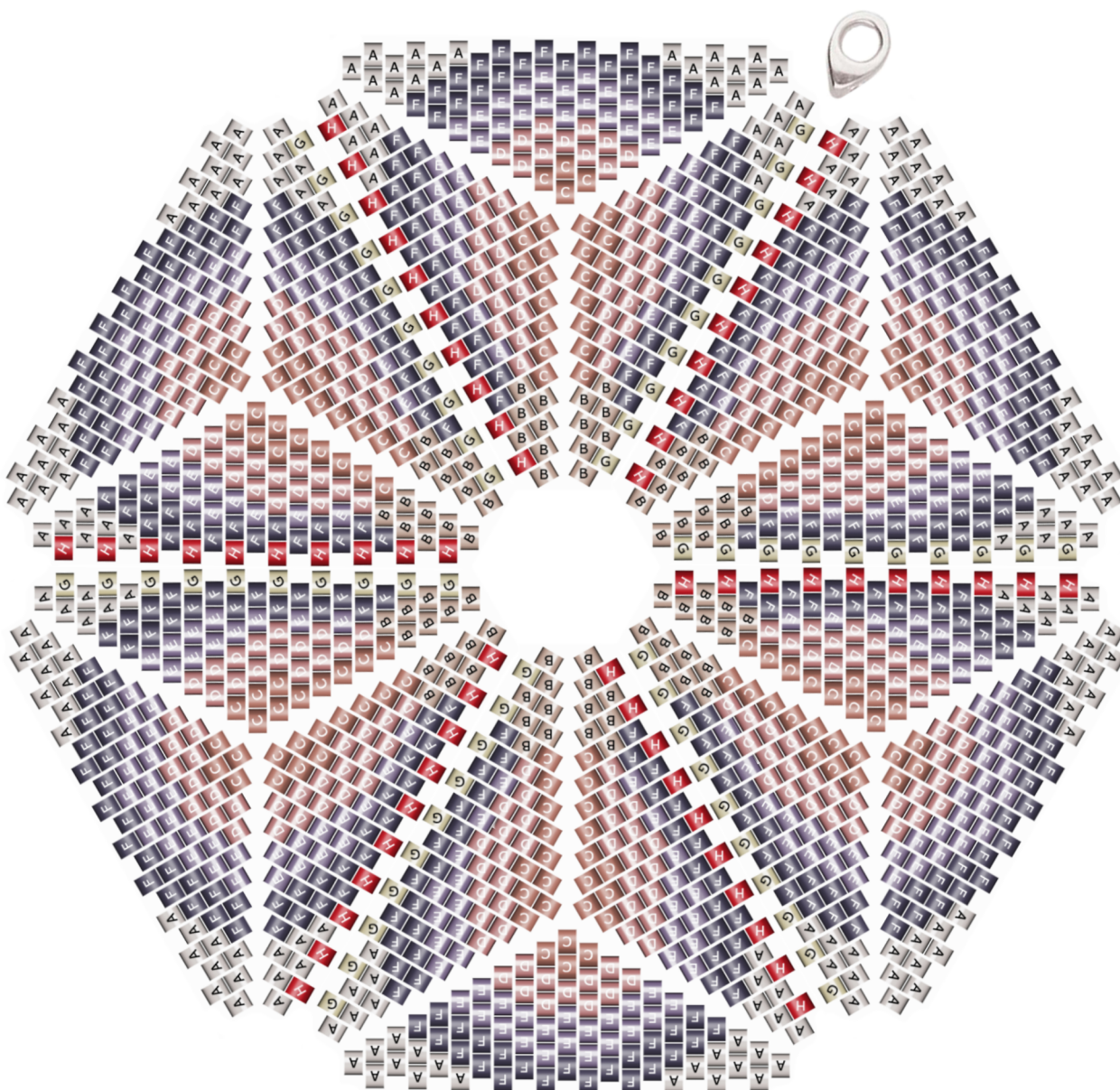
If you are choosing to create a five triangle the layout is the same just with one less triangle.

The Red H Bead indicates the position where the G bead will be stitched into place as you join the two triangles.

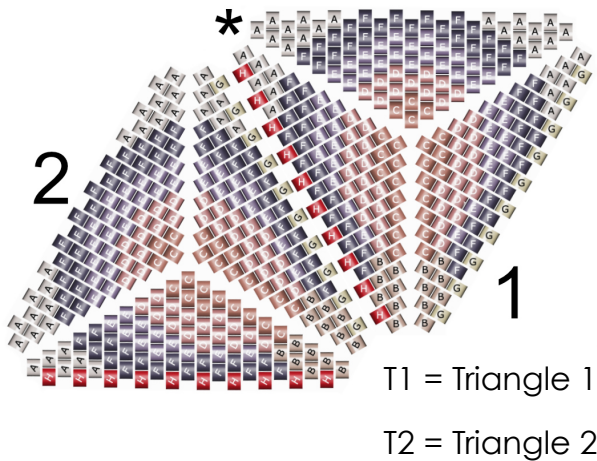
Joining (Zipping) Triangles Together Demonstration Video



Adding the Kolympos Hanger Demonstration Video



Instructions - Joining



Pick up the needle attached to T1- the thread should be exiting from an A bead at the end of the top row (*). Pass the needle through the A bead at the top so that you are on the third side of the triangle (this is the A bead sitting above the first H).

From here we will zip the two triangles together. Using a size 12 needle pass through the following beads:

(T2) **G**, T1 **A**, T2 **G**, T1 **A**, T2 **G**, T1 **F**, T2 **G**, T1 **F**, T2 **G**, T1 **F**, T2 **G**, T1 **F**, T2 **G**, T1 **F**, T2 **G**, T1 **F**, T2 **G**, T1 **B**, T2 **G**, T1 **B**

You will then pick up a G bead, pass through the next B bead and repeat the path of row 12 of the triangle until you are exiting through the A bead at the end.

To finish off, create a simple knot between the A beads.

Repeat until you have joined all five or six triangles in your pendant.

Add the Kolympos to act as a pendant hanger when joining triangle 2 and 3 - see steps below for this.

Instructions - Hanger

Before you tie off your thread after zipping triangle two and three add the Kolympos hanger.

With the thread exiting from the final A bead on Triangle 3, pass your needle through the hole in the Kolympos and back down through the top A bead in triangle 2 and back up through the A bead in triangle 3.



Repeat this 2 or 3 times to secure the Kolympos in place and then finish off thread.

