



Swing Earrings

Art Deco inspired earrings with the brand new Matubo NIB-BIT



Material (for one pair of earrings):

Matubo NIB-BIT (20 pcs)

Matubo 8/0 (6 pcs)

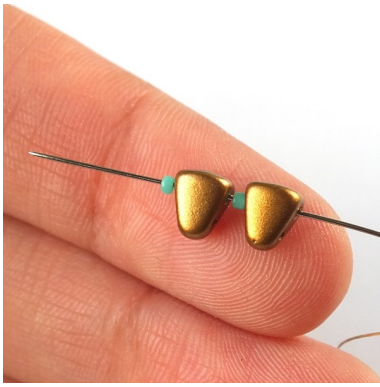
15/0 Japanese seed beads (approx. 0,2 gram)

11/0 Japanese seed beads (approx. 0,5 gram)

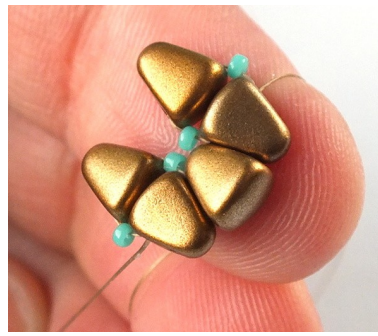
Jump rings, earring components

Beading needle and thread (Fireline)

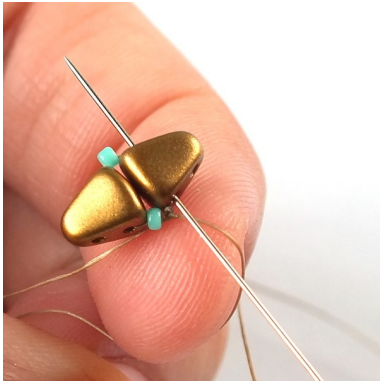
Difficulty : For beginners



1) String one 15/0, one NB (through the wide end), one 15/0 and one NB (through the wide end).

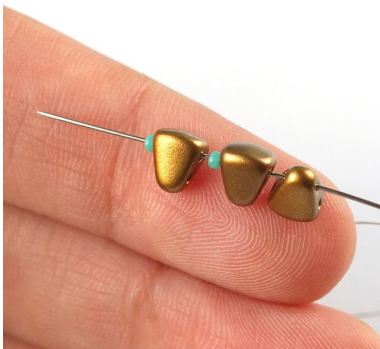


6) You should get an object that looks like this.



2) Slide all the beads to the end of the thread and tie a square knot. This should form. Then pass through the lower hole (wide end) of the nearest NB.

7) Repeat steps 3 - 5 ...



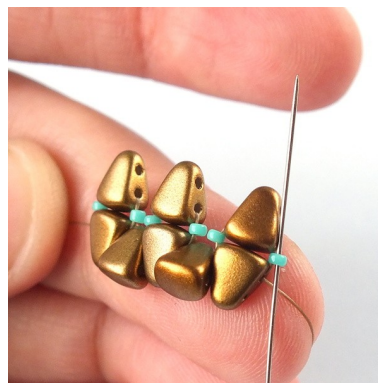
3) Add one NB (narrow end), one NB (wide end), one 15/0, one NB (wide end) and one 15/0.



8) ... to get this.



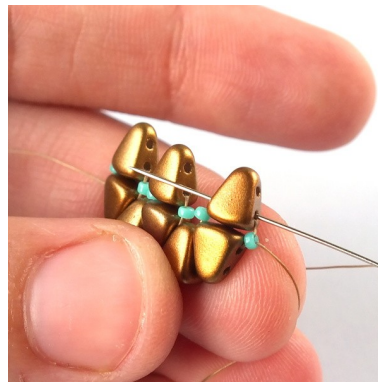
4) Let all the new beads slide down and align them as shown in the photo ...



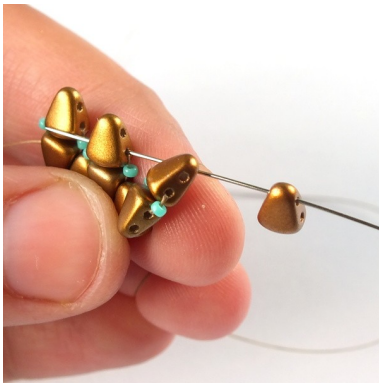
9) Pass through the next 15/0 ...



5) ... and then pass through the wide end of the "middle" NB bead you added in the previous step. Pull snug.



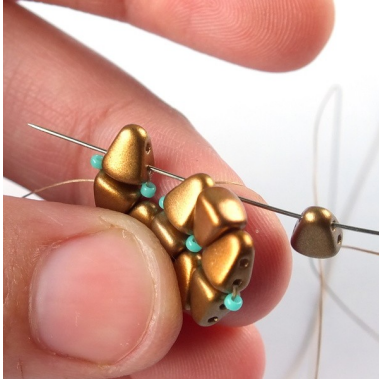
10) ... and then through the lower hole (wide end) of the next NB.



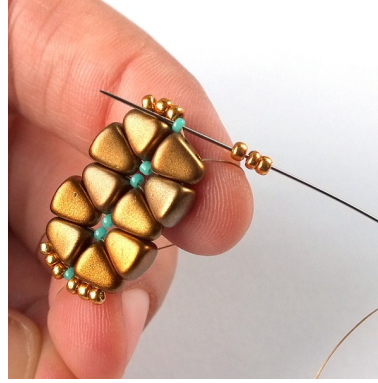
11) Add one NB (narrow end) and pass through the lower hole (wide end) of the next NB in the row.



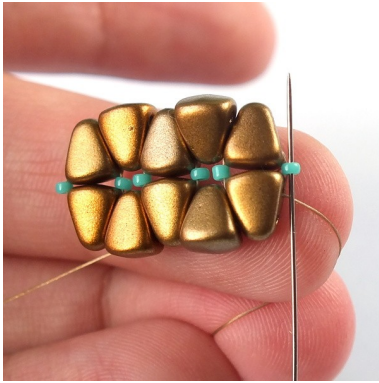
16) Add three 11/0s and pass through all the outer holes of the five NBs on the side of the oblong (like in step 14).



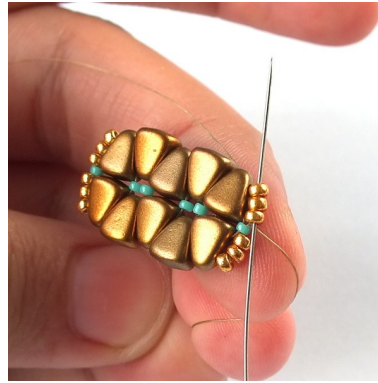
12) Repeat step 11 one more time.
An oblong should form.



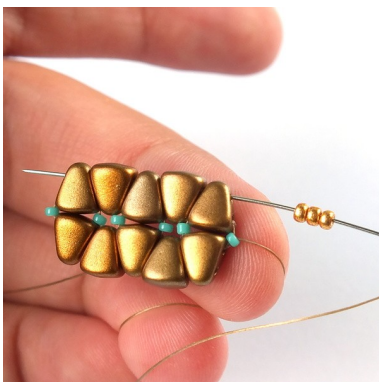
17) Add three 11/0s and pass through the next 15/0 ...



13) Pass through the nearest 15/0.



18) ... through the next three 11/0s ...

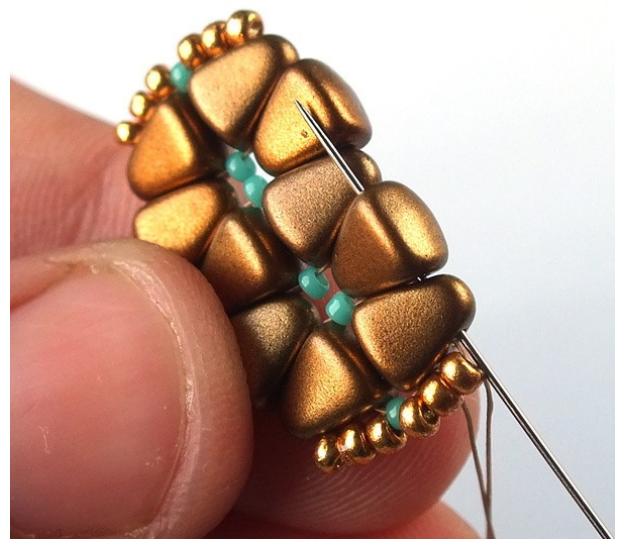


14) Add three 11/0s and pass through the outer holes of all the five NBs on the side of the oblong.

19) ... and through the outer holes of the next two NBs



15) Add three 11/0s and pass through the next 15/0.



20) Add three 11/0s, one 8/0 and three 11/0s and pass through the outer holes of the last two NBs on the other side of the oblong (as shown in the photo).

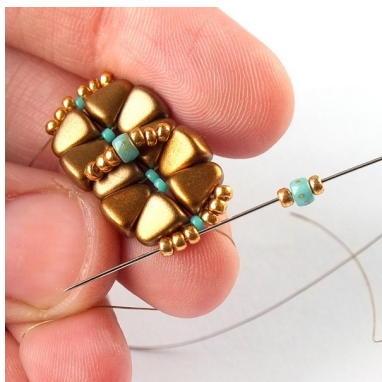


24) Add three 11/0s and pass through the 8/0 in the middle.

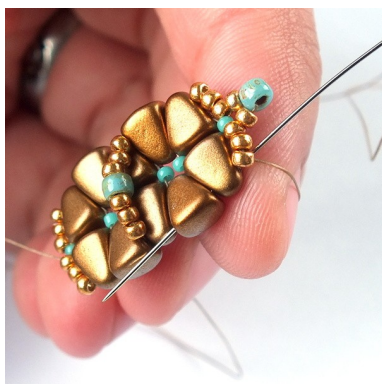


21) Pass through the next three 11/0s.

25) Add three 11/0s and pass through the outer holes of the next two NBs on the other side of the oblong.



22) Add one 11/0, one 8/0 and one 11/0 and pass through the next three 11/0s ...



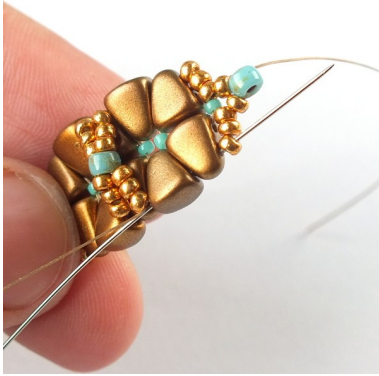
23) ... and then through the outer holes of the next two NBs.



26) Pass through the next three 11/0s.



27) Add one 11/0, one 8/0 and one 11/0 and then pass through the next three 11/0s



28) Optionally you can weave through the last row one more time - but skip the 8/0s on the ends of the earring.



29) Tie off all the ends of the thread. Use jump rings to attach earring components of your choice and optionally a little charm, drop-shaped bead or a chain tassel to the 8/0s on

the ends of the earring.

Colorways:



Matubo NIB-BIT 00030/01640

Matubo 8/0 63130/43400

15/0 Miyuki seed Beads 0413 Opaque Turquoise Green

11/0 Miyuki Seed Beads 4203 Duracoat Galvanized Yellow Gold

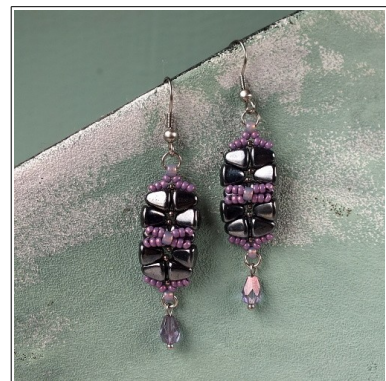


Matubo NIB-BIT 03000/14459

Matubo 8/0 03000/14459

15/0 Miyuki Seed Beads 460 Metallic Dark Raspberry

11/0 Miyuki seed Beads 460 Metallic Dark Raspberry



Matubo NIB-BIT 23980/14400

Matubo 8/0 21010/81800

15/0 Miyuki Seed Beads 451 Metallic Hematite

11/0 Miyuki seed Beads 55053 White Opaque Lila Vega Luster