

# Sun Amulet



## Material:

- Matubo 7/0 beads (2 - 4 colors)
- Matubo Superunos
- 11/0 seed beads
- Round beads, 2-3 mm in diameter
- Center bead (round or flat round)
- Tigertail beading wire
- Crimp beads, bead tips, jump rings and a clasp
- Beading needle
- Nymo or Fireline beading thread

Difficulty: Intermediate

Technique: Brick stitch

For a center bead you can use larger round or flat round (coin shaped) or flat oval bead. When using a flat round beads, choose the ones with thick and "flat" edge. Avoid beads with thin or rounded edge.

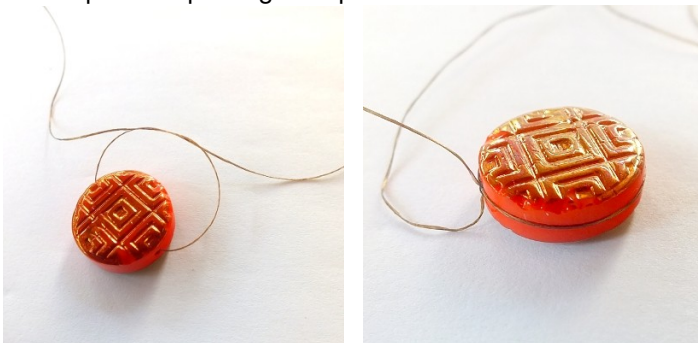
For example:

These are OK:

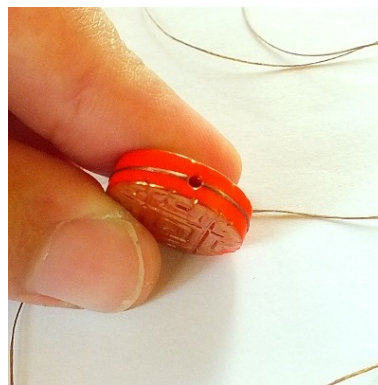
These are not:



1) Pass through the center bead, move it to the end of the thread and then tie a square knot. You want a thread loop to form alongside the edge of the bead. Add a few more knots to keep the loop as tight as possible.

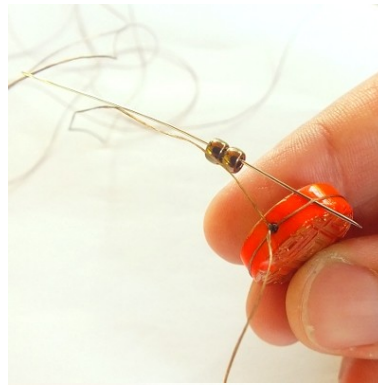


2) Pass through the center bead again.

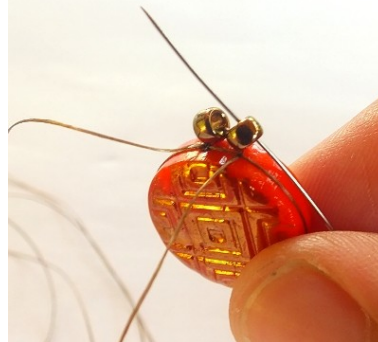


3) Now another thread loop formed on the other half of the bead. Add a few more knots to keep both the loops as tight as possible.

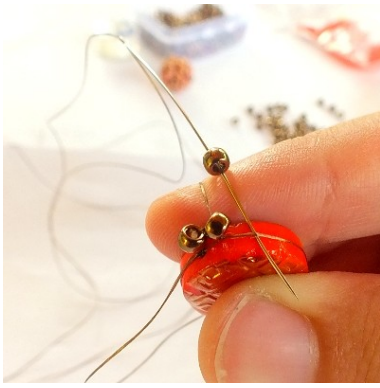
## First row:



4) Add two Matubo 7/0 beads and then pass the needle under the thread loop and pull snug.



5) Then pass the needle up through the second Matubo 7/0 bead.



6) Add another Matubo 7/0 bead and pass the needle under the thread loop and pull snug.



7) Then pass the needle up through the bead you just added.



8) Repeat steps 6 ...



9) ... and 7 around the center bead.



10) When you reach the hole in the center bead, just skip it and continue on the other thread loop.



11) When you reach the end of the row, pass your needle down the first bead of this row.



12) Then pass the needle under the thread loop on the center bead.



13) And then go up through the first bead of this row. Now the first row is finished.

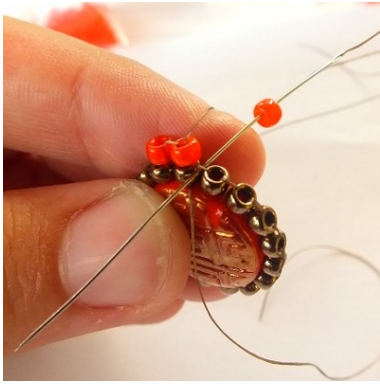
### Second row:



14) Start the second row by adding two Matubo 7/0 beads and passing the needle under the thread between beads from the first row.



15) Then pass the needle up the second Matubo 7/0 bead and pull snug.

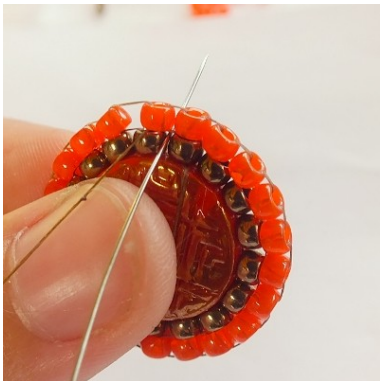


16) Keep adding more beads like in steps 6 and 7. Add one Matubo 7/0 bead, pass the needle under the thread and then up through the same bead.

Try to always add the right amount of bead in each row. If you add too much beads, the edge of your pendant will start to ruffle. If you don't add enough beads, spaces between them will be too large and your pendant won't lie flat (if you keep your tension strong, it may even curl into a bowl-like shape).



17) When you reach the end of the row, finish it like you finished the first row. Pass the needle down the first bead of the row ...

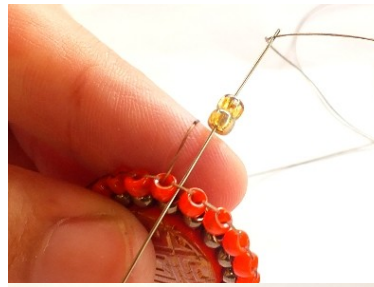


18) ... then pass it under the thread under the first bead ...



19) ... and then go up through the first bead again.

### Third row:



20) Start the third row by adding two Matubo 7/0 beads, pass the needle under the thread and then go up through the second Matubo 7/0 bead added.



21) Then add one Matubo 7/0 at a time (like in steps 6 and 7) until you reach the end of the row.



22) Finish the row like the previous one (repeat steps 17, 18 and 19). If you wish to make a bigger pendant, add few more rows.

### Edge



23) Start the last row with three beads - one Matubo 7/0, one Superuno and one more Matubo 7/0. Then pass the needle under the thread.



24) Pull snug and then pass the needle up through the second Matubo 7/0 bead you added in the previous row.



25) Then add one Superuno and one Matubo 7/0.



26) Pass the needle under the thread between beads in the previous row.



27) And go up through the Matubo 7/0 bead you just added.



28) Repeat steps 25, 26 and 27 until you reach the end of the row. At the end, add one Superuno bead and then go down through the first Matubo 7/0 bead of this row.



29) Pass the needle under the thread between beads in the previous row.



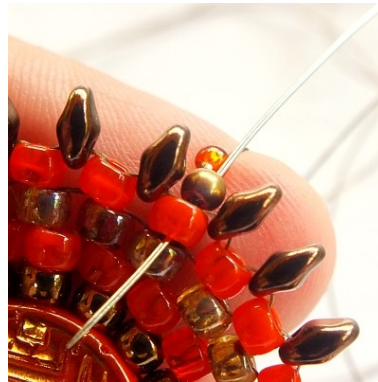
30) Then pass the needle up through the first Matubo 7/0 bead of this row.



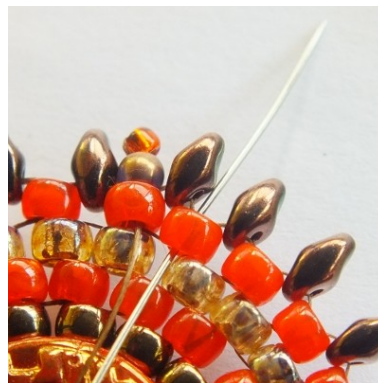
31) Now the thread is exiting one of the Matubo 7/0 beads of the last row.



32) Add one small round bead and one 11/0 seed bead.



33) Then go back through the round bead and through the Matubo 7/0 bead underneath.



34) Then go up through the next Matubo 7/0 bead.



35) Repeat steps 32, 33 and 34 until you reach the end of the row.



36) Tie a few half-hitch

knots and cut off the remaining thread.



37) Prepare a piece of tigertail beading wire (approximately 16 to 20 inches) and pass it through two of the 11/0 seed beads.



38) Optionally, you can add some more beads on the beading wire.

39) Finish the beading wire by your favorite method. I usually use crimp beads with bead tips.



40) Then add a clasp.



*Finished pendant*



*Finished pendant*



*Try substituting Matubo beads by different types and sizes of seed beads.*