

I ♥ BEADS

Sparkle Plenty Beaded Bead

a tutorial by
Sharri Moroshok



**A Peyote Stitch Project
For Intermediate Beaders**

(c)2016 Sharri Moroshok

www.TheBeadedBead.etsy.com

www.beadsmith.com

Sparkle Plenty Beaded Bead

Materials List: *(quantities listed are for 1 beaded bead)*

Matching or close to matching 11/0 and 15/0 Miyuki seed beads *(1 gram each)*

3.8x1mm Czech O beads *(6 beads)*

True 2mm Czech Fire Polish Crystals *(192 beads)*

11/0 Miyuki seed beads *(can match, blend or contrast the True 2s) (12 beads)*

Fireline *(4 or 6 lb test)*

Size 11 or 12 beading needle

16mm round unfinished wood bead

Small glue dots *(I use the small size "Zots" which can be found at most craft stores and online)*

Color Key:

#1 = 11/0 Miyuki seed bead (11-338 lined emerald luster) referred to as 11A

#2 = 3.8x1mm Czech O Bead (Jet Black) referred to as O

#3 = True 2mm Czech Fire Polish Crystal (gold plated) referred to as FP

#4 = 15/0 Miyuki seed bead (15-2241 lined emerald luster) referred to as 15/0

#5 = 11/0 Miyuki seed bead (11-191 24k gold plated) referred to as 11B

Sparkle Plenty Beaded Bead

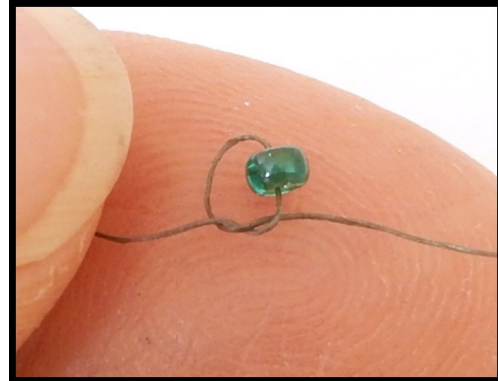
Getting started

Thread needle with approximately 1.5 yards of thread. String on **one #1 (11A) bead** slide it to the end of your thread, leaving a short tail and tie with a simple overhand knot. This is not a stopper bead, it will become part of your pattern. **(photo 1)**

Then string on:

- 1 #2 (O) bead
- 1 #1 (11A) bead
- 3 #3 (FP) beads

- 1 #1 (11A) bead
- 1 #2 (O)bead
- 1 #1 (11A) bead
- 3 #3 (FP) beads



(photo 1)

Repeat the pattern between the asterisks 4 more times

Total = 36 beads (photo 2)



(photo 2)

Close a circle by passing the thread back through the tied on bead and 2 more beads.

Test the fit of your circle on the base bead. Holding your circle closed - you can do this by sliding thumb and forefinger down the thread to the beadwork. Place the circle at the center of the base bead. (photo 3) It should fit closely, but able to be pressed over the center of the base bead without separating the beads from each other. A bit too loose is better than a bit too tight, however you don't want the circle to just drop over the base bead. You can adjust the size of your circle of beads by re-stringing using thinner 11/0 beads (if the circle is too loose) or thicker 11/0 beads (if the circle is too tight).



(photo 3)

When you are satisfied with the fit pass the thread all the way around the circle, through the tied on bead and 2 more beads. Thread will be exiting a #1 (11A) bead. Don't pull your thread super tight. The circle should be completely closed with no gaps between beads, but with a tiny bit of relaxation in the thread.

(photos 3 & 4)



(photo 4)

Beginning the 1st side of your beaded bead

Work with circle of beads in your hand, off the base bead.

Row 3 (the beads in your original strung circle will form rows 1 & 2)

Begin circular Peyote Stitch

Stitch 1 #3 (FP) bead

1 #3 (FP) bead

Without adding a bead, stitch through the next adjacent #2 (O) and #1 (11A) beads (photo 5a)

Repeat this pattern 5 more times

Step up through a #3 (FP) bead (photo 5b)



(photo 5a)



(photo 5b)

Row 4

Stitch

- 1 #3 (FP) bead
- 1 #4 (15/0) bead (stitching to the O bead - you will probably have to dig your needle into the O bead)
- 1 #4 (15/0) bead

(photo 6a)



(photo 6a)

Repeat this pattern 5 more times

Step up through a #3 (FP) bead

(photo 6b)



(photo 6b)

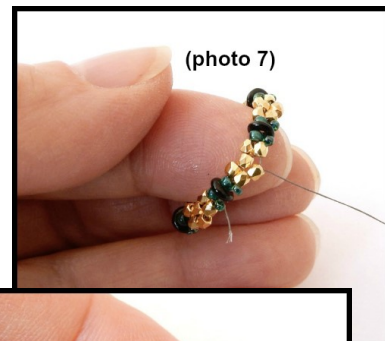
When you are on the first side of the beaded bead:

At this point - going into **Row 5**, I like to begin holding my beadwork on a fingertip. (photo 7)

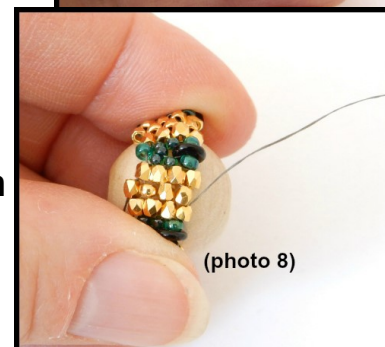
Take care to not let your beadwork circle twist.

Later, when you are on the second side, with beadwork on the base bead:

I find it helpful in keeping the beadwork in place on the base bead to grip the beadwork rather than the base bead as I stitch. (photo 8)



(photo 7)



(photo 8)

Row 5

Stitch

- 1 #3 (FP) bead
- 1 #4 (15/0) bead
- 1 #3 (FP) bead

(photo 9a)

Repeat this pattern 5 more times

Step up through a #3 (FP) bead

(photo 9b)



(photo 9a)



(photo 9b)

Row 6

Stitch

- 1 #4 (15/0) bead
- 1 #4 (15/0) bead
- 1 #5 (11B) bead *heads up! This is an 11/0 not a FP*

(photo 10a)

Repeat this pattern 5 more times

Step up through a #4 (15/0) bead

Now without adding a bead, stitch through the next two adjacent #4 (15/0) beads

(photo 10b)



(photo 10a)



(photo 10b)

Row 7

Stitch

1 #3 (FP) bead

1 #3 (FP) bead

Without adding a bead, stitch through the next two adjacent #4 (15/0) beads

(photo 11a)



(photo 11a)

Repeat this pattern 5 more times

Step up through a #3 (FP) bead

(photo 11b)



(photo 11b)

Row 8

Stitch

1 #3 (FP) bead

1 #1 (11A) bead

(photo 12a)

Repeat this pattern 5 more times

Step up through a #3 (FP) bead

(photo 12b)

(photo 12a)



(photo 12b)

If you are here for the first time just continue on to the * on page 8

If you are reaching this point for the 2nd time proceed to the ** on page 8

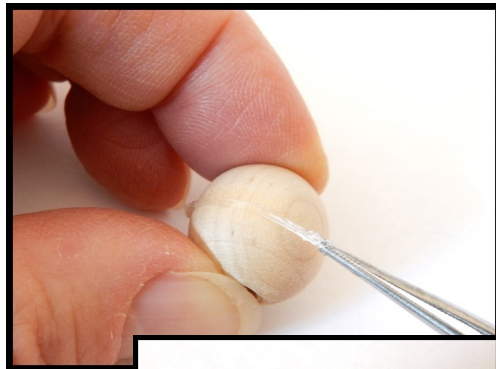
*** You will now switch to working on the second side of your beaded bead.**

Drop your working thread (you may want to leave a needle threaded). Flip your beadwork and start a new thread (approximately 1.5 yard) Weave the new thread in the opposite direction of your first thread until it is secure. Exit the new thread, on the original edge of the beadwork, through any #3 (FP) bead just after a #1, #2, #1 (11A, O, 11A) sequence. (photo 13) Cut new thread tail off flush. Your new thread will now be traveling in your correct working direction on the second side of the beaded bead.



(photo 13)

Apply glue dots around the center meridian of the base bead. I like to apply them with a tweezers. Just place each dot on the center of the base bead and use the tweezers to stretch each one. It will take 3 or 4 dots. It is OK if there are little gaps between each. (photo 14)



(photo 14)

Tug your first thread tight.

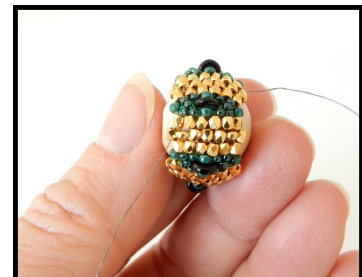
Slide beadwork on to the base bead leading with the new (second side) edge. Press right over the glue dots until that new edge is at the middle of the base bead. The original thread tail should be tucked underneath your beadwork. If it is not completely hidden now, you can cut it shorter if you wish. (photo 15)



Repeat **Rows 4-8** (pages 5-7) on the second side

**** Center your beadwork on the base bead by looking at the distance of your beadwork to the hole on each side. The glue dots should still be flexible enough to allow you to press the beadwork back and forth a bit. When it is well centered tug both threads tight. (photo 16)**

(photo 16)



Let your working thread hang and return to the 1st Side of your beaded bead.

Row 9

Stitch

- 2 #3 (FP) beads (this is a 2-drop Peyote Stitch) in each large space stitching to the next upmost #3 (FP) **(photo 17a)**



(photo 17a)

Step up through a 2-drop #3 (FP).

(photo 17b)



(photo 17b)

Let your working thread hang and Repeat **Row 9** on the other side.

Eyeball both sides of your beaded bead and check to make sure they are as close to equidistant from the hole ends as possible. You should still be able to press the beadwork back and forth a bit.

Complete **Rows 10 –12** on one side and then the other. There are **Optional Rows 13 and 14**.

Row 10

Stitch

- 1 #3 (FP) bead stitching through the 2-drop

Anchor the 2-drop to the cluster of 3 beads (#3, #1, #3) directly above it by stitching a loop of thread **(photos 18a, 18b)**

Repeat 5 more times

Step up through a #3 (FP)

(photo 18c)

(photo 18a)



(photo 18b)



(photo 18c)

Row 11

Stitch 1 #3 (FP) bead in each Peyote Space pulling up on your thread as you stitch each bead

Step up through a #3 (FP) bead

(photo 19)

(photo 19)



Row 12

Stitch 1 #3 (FP) bead in each Peyote Space pulling up on your thread as you stitch each bead

Step up through a #3 (FP) bead

(photo 20)

(photo 20)



If you have reached the hole end of your base bead you can skip Rows 13 and 14 and end this side here by stitching a reinforcing round of thread through Row 12 and then weaving through the beadwork until thread is secure. Cut off tail flush. If there is still some space you would like to fill proceed to Row 13 and Row 14

Row 13 (optional)

Stitch

1 #4 (15/0) bead in each Peyote space pulling up on your thread as you stitch each bead

Row 14 (optional)

Stitch

1 #4 (15/0) bead in each Peyote space

(photo 21)

(photo 21)



Finish by stitching a reinforcing round of thread through the last Row. Weave thread until secure and then cut off flush.

Repeat Rows 10-12 (pages 11-12) and, if you choose, Rows 13 & 14 on the other side.