



RISING SUN BRACELET

BY MICHELE KLOUS

www.etsy.com/shop/manystitchesintime



Make this fun fiery sun project with Paisley duo, Gemduo beads as well as the new Cymbal Silky side bead Kardiani and the Cymbal Silky end Fero.

Skill Level: Intermediate and up

Techniques to know: Peyote stitch and zip-up, working with two-holed beads, ending/adding thread.

MATERIALS:

32 pcs. – Paisley Duo (**PD**)

8 pcs. – GemDuo (**GD**)

16 pcs. – Kardiani Cymbal Silky side bead

6 pcs. – Swarovski 3mm Bicone (5328)

3 pcs. – 14mm 2-Hole Coin Bead

44 pcs. – Miyuki 11/0 Seed bead (**11A**)

8 pcs. – Miyuki 11/0 Seed bead (**11B**)

116 pcs. – 15/0 seed bead

Cymbal Fero Silky ending

2 pcs. - Jump rings

Clasp of choice

6lb. Fireline

#12 beading needle

Pliers to open jump rings

Please respect my designs by not reselling or altering my patterns in any way. Do not replace or modify text, images, names, logos, or URLs. Feel free to recreate this design for personal use and limited sales but not for mass production. Permission to teach this pattern is exclusive to customers of The Beadsmith.

DESIGNER TIP

Check all holes of any multi-holed beads to make sure they are clear before use. I check mine with a bead reamer before I start, but you can check each before you add them, you will be upset if you find a hole is missing in the last steps!

NOTE: All GemDuos (**GD**) and Paisley Duos (**PD**) will be picked up face up and in a vertical direction through the entire tutorial as diagramed. A Bicone set consists of (1-11A, Bicone and 1-11A).

FIRST SET - (FIGURE 1)

1. Starting at the red dot, with 2.5 yards of thread, pick up 1-PD by sewing up into the outer side of the bulb, 1-15/0 and 1-PD by sewing down into the inner side of the bulb. Repeat three more time for a total of 4 sets. Push them to the end of the thread leaving about a 6-inch tail to sew in later.

CLOSING THE LOOP - (FIGURE 2)

2. Starting at the red dot, sew back up into the entire 4 sets of beads you picked up in Step 1 to form a loop. Make sure you are exiting out the PD past the tail to secure it, (where the red arrow ends).

TIGHTENING UP THE LOOP - (FIGURE 3)

3. Starting at the red dot, with an empty needle, sew through all the PD beads skipping the 1-15/0, then and exit out the outer side of the second bead past the tail. You can tie a half hitch knot here to secure the loop's tension, but you don't have to. Lastly, sew into the point of the same bead to exit into the inner side, between the two PDs. The 15/0 bead should be between the set where you will be exiting.

After step 3, I turned my work to a comfortable direction as well as to keep the tail on the end bead. Feel free to turn yours another way but, be sure to check the beads are added all in the same direction! I flipped the beadwork over from left to right to see the back, so the tail is on the left side now.

ADDING GEMDUO SETS AND KARDIANIS FOR THE MOTIF (OUTER ROUND) - (FIGURE 4)

4. Starting at the red dot, pick up 1-11A, 1-GD up through the right side and 6-15/0. Push them down to the PD's point and sew down into empty side of the same GD. Exiting the other side of the GD, pick up 1-11A, then, sew into the PD point directly across the open space from the one you are exiting. This places the GD into the space over the 15/0 between the points of the PDs.
Be sure to pull thread again to make sure the slack is gone and it's secure in the space.
5. Still following the red line, pick up 1-Kardiani Cymbal right side up, with the point towards you, from right to left, then sew into the next PD directly across from the one you are exiting.
6. Starting at Green dot, between the inner points of the PD, pick up 1-11A, 1-15/0, the Fero Cymbal End, 1-15/0 and 1-11A. Push the beads down to the others then sew into the next PD.
7. Still following the green line, repeat Step 5 placing the Kardiani between the PD.
8. Following the black line, repeat Steps 4 and 5 placing another GD set and the third Kardiani.

Please respect my designs by not reselling or altering my patterns in any way. Do not replace or modify text, images, names, logos, or URLs. Feel free to recreate this design for personal use and limited sales but not for mass production. Permission to teach this pattern is exclusive to customers of The Beadsmith.

ADDING THE FIRST COIN SET - (FIGURE 5)

9. Starting at the red dot, pick up 1-11A, 1-Coin, 1-11A and 1- PD by sewing down into the inner point. Next, sew into the empty hole of the same bead to exit out the inner side of the bulb.
10. Starting at the blue dot, pick up 1-15/0, 1-PD by sewing down into the inner side of the bulb. Sew down into the empty hole of the same bead to exit between the inner point sides of the PD.
11. Still following the blue line, exiting the PD's point, pick up 1-11A, then sew down into the empty hole of the Coin bead.
12. Exiting below the Coin. Pick up 1-11A, then, sew into the point of the next PD. Pick up a Kardiani then sew into the next PD. Sew into the 11A and exit out the GD.

ADDING POINTS ON THE GEMDUO - (FIGURE 6)

13. Starting at the red dot, sew up through the first 3-15/0 (or middle of the 6-15/0), then, pick up 1-11B and sew down into the other 3-15/0. Continue sewing through the GD, 11A, PD, Kardiani, PD, 11A, 15/0, the Fero End, 15/0, 11A, PD, Kardiani, PD, 11A, GD and the first 3-15/0 to exit.
14. Starting at the black dot, pick up another 1-11B, then, sew down into the 3-15/0, GD, 11A, PD, Kardiani, PD, the 11A and exit out the Coin bead between it and the 11A.

ADDING THE 2 BICONES SETS OVER THE COIN - (FIGURE 7)

15. Starting at the black dot, pick up 1-11A, 1-Bicone and 1-11A (Bicone set), then sew down into the other hole of the Coin, before the 11A to exit.
16. Pick up another 1-11A, 1-Bicone and 1-11A, then, sew up into the other hole of the Coin to exit out the place you began Step 15. Keep sewing up through the 1-11A, the PD point, the other hole of the same PD, the 15/0 between them and finally exit out the outer bulb side of the second PD.

STARTING THE NEXT MOTIF (PAISLEY DUO LOOP) - (FIGURE 8) Diagrams shortened after this point

17. Starting at the red dot, pick up 1-PD by sewing up into the outer side of the bulb, 1-15/0 and 1-PD sewing down into the inner side of the bulb.
18. Pick up 2 more PD sets, then, close the circle by sewing into the PD, 15/0 and PD connected to the Coin. Continue sewing through all the beads again to reinforce the circle, stopping after the first PD over the Coin **BEFORE** the 15/0.
19. Sew through all the PD beads **SKIPPING** the 15/0 beads. Stop after you exit the outer bulb of the PD **BEFORE** the PD beads connected to the Coin. Then sew up into the point of the same PD to exit between the two PD beads where a GD would be placed.

ADDING OUTER ROUND BEADS TO SECOND MOTIF - (FIGURE 9)

20. At the red dot, pick up and place the GD set between the next PD beads like Step 4. Then add the Kardiani like in Step 5.
21. At the green dot, repeat all of steps 9 through the first part of step 12 adding the Coin and its PD beads between the next PD space. Finally add the Kardiani and sew into the next PD point.

22. At the black dot, repeat Step 4-5 adding the GD and that Kardiani. Continue sewing through the 11A, into the Coin **skipping the 11/0 below it attached to the PD**. Keep sewing up through the Bicone set, then, into the other side of the Coin, the 11A and exit out between the outer points of the two PD beads. Pick up and place the final Kardiani. Continue sewing into 11/0 and exit out the GD.

ADDING THE POINTS ON THE GEMDUOS AND 1 BICONE SET - (FIGURE 10)

23. Starting at the red dot, sew up through 3-15/0. Pick up 1-11B, then, sew into the next 3-15/0, GD and 11A. Continue sewing through the outer round beads to exit out the top of the Coin.
24. Exiting the Coin at the blue dot, pick up Bicone set, then, sew down into the other hole of the Coin, the 11A, PD, the Kardiani, PD, 11A, GD and exit out the middle of the 6-15/0.
25. At the black dot, pick up 1-11B, then, sew into the other 3-15/0, GD, 11A, PD, the Kardiani, PD and the 11A. Continue sewing on into the other Coin, the Bicone set (**already there**), up into the other side of the Coin and the 11A. Finally, sew through all of the outer round beads, up into the 11A and the 2nd Coin, into the next 11A, the PD point and then into the bulb, the 15/0 and the second PD outer bulb side to exit where you start a new Motif.

ADDING THE THIRD MOTIF - (FIGURE 11, 12 and 13)

Line colors may vary because some steps are combined.

26. Repeat Steps 17-19 as if the same (Figure 11).
27. Next, repeat Step 20 through the first part of step 22, until you exit out the Coin before the 11A. There isn't a Bicone to sew into here so, pick up and place the Bicone set, then continue Step 22 to the end (Figure 12). Finally, continue with Steps 23-25 as the same (Figure 13).

SIZING: Each motif and Coin are approx. 1.5 inches. With the three sets it is approximately 4 5/8 inches in length. One more motif with the Fero End will make about 5 7/8 inches in length before the clasp and jump rings. If you add another set it will add another 1.5 inches, which will probably be too big. You can add a small jump ring on one end or both if you need a little space. If you need more that that you may consider adding the set and using a small magnet or lobster clasp for closure instead of the toggle.

ADDING THE FINAL MOTIF- (FIGURE 14)

28. At the red dot, repeat Steps 17-19 making the ring of PD for a new motif.
29. Repeat Steps 4-7 adding the first GD, Kardiani, Fero and the second Kardiani.

THE FINAL GD - (FIGURE 15)

30. At the red dot, repeat Step 8 adding the GD and Kardiani.
31. At the black dot, sew down into the 11A and exit out Coin. Pick up a Bicone set, then, sew up into the 11A, the Coin, 11A and exit out the PD.
32. Pick up and add the Kardiani. Sew through the outer beads exit out in the middle of the 6-15/0.

ADDING THE FINAL POINTS - (FIGURE 16 and 17)

33. At the red dot, exiting out middle of the 6-15/0, pick up and place the 1-11B, then sew through the outer round beads including the Fero to the other side into the GD and out the middle of the 6-15/0 and add the last 1-11B. Sew through the beads through the Coin, the Bicone set, up the Coin and out through the outer beads to exit out the Kardiani. Tie a half-hitch knot there between the Kardiani, then sew through the beads to the next Kardiani. Tie two more knots where the blue arrows are on Figure 16.
34. Put the jump ring and clasp on and you are done!



Michele has a background in graphic arts where she learned all about color. She also worked outdoors for many years in her youth which inspired her to use rich and vibrant color schemes. After an injury some years ago, Michele I went to a fair and saw beadwork for the first time. That was all it took ... she was hooked! She decided that she had to learn everything there was to know about beadwork including knitting and crocheting with beads. Since that day Michele was aspired to create, teach and share her own beaded creations.

You can find more of Michele's beautiful designs in her etsy shop - www.etsy.com/shop/manystitchesintime.

Bead Key

All Paisley Duo beads will be picked up in the vertically through either the inner or outer sides throughout the tutorial.

All Gemduo beads will be picked up in the vertically through either the right or left sides throughout the tutorial.

In some figures the dots and lines will be in multiple colors in the same step to separate and make different parts more clear and easier to follow along with the written directions.

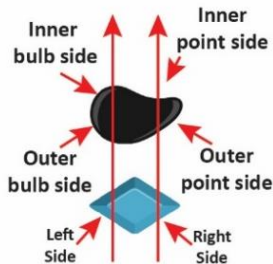


FIGURE 1

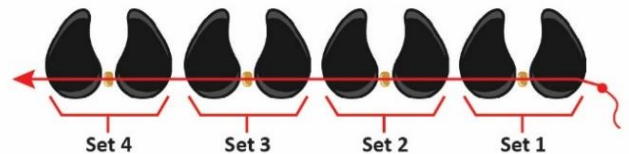


FIGURE 5

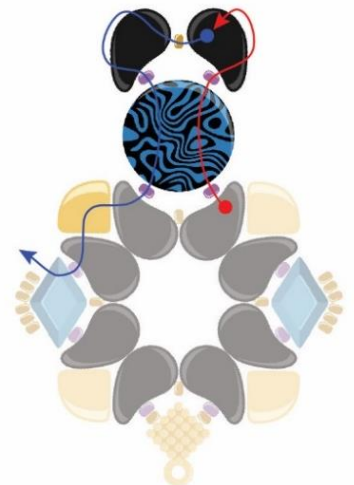


FIGURE 2

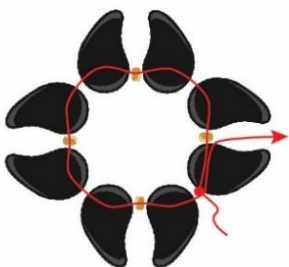


FIGURE 3

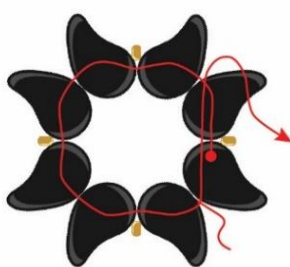
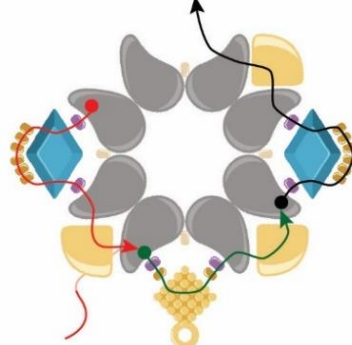


FIGURE 4



Please respect my designs by not reselling or altering my patterns in any way. Do not replace or modify text, images, names, logos, or URLs. Feel free to recreate this design for personal use and limited sales but not for mass production. Permission to teach this pattern is exclusive to customers of The Beadsmith.

FIGURE 6

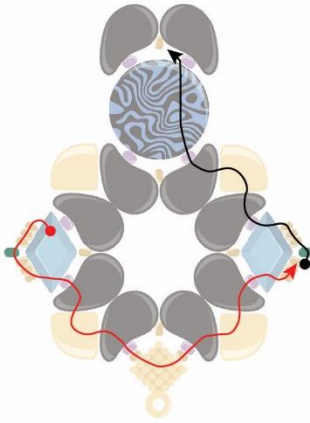


FIGURE 7

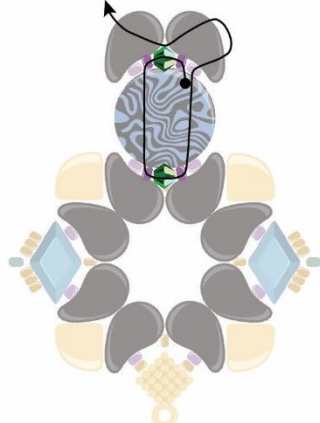


FIGURE 8

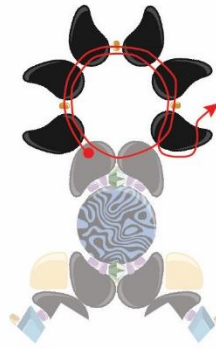


FIGURE 9

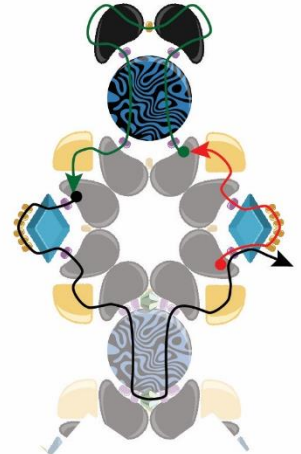


FIGURE 10

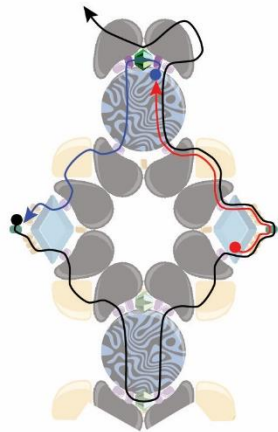


FIGURE 11

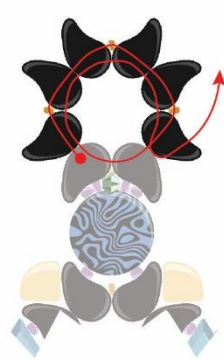


FIGURE 12

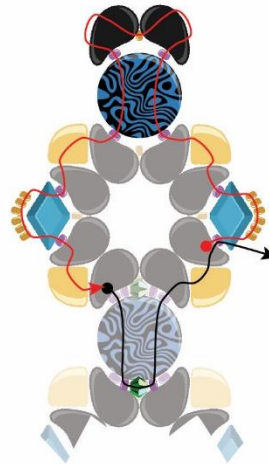


FIGURE 13

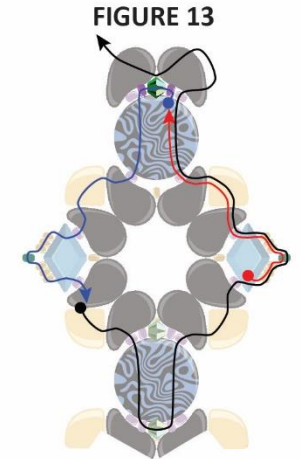


FIGURE 14

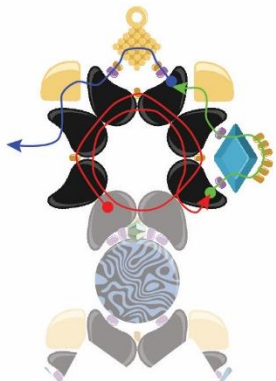


FIGURE 15

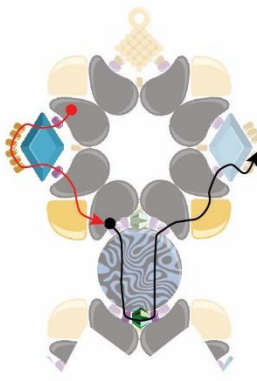


FIGURE 16

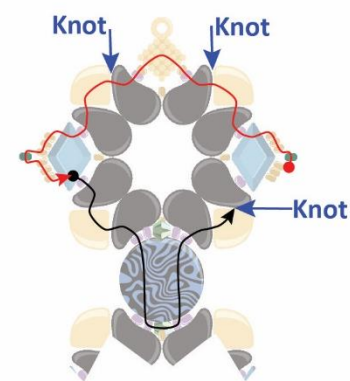
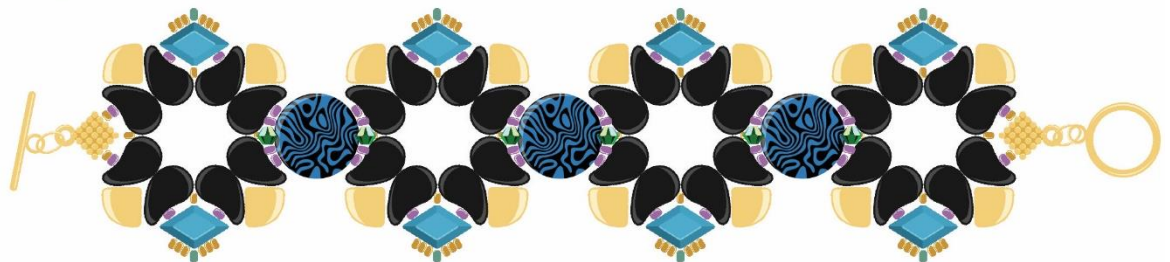


FIGURE 17



Please respect my designs by not reselling or altering my patterns in any way. Do not replace or modify text, images, names, logos, or URLs. Feel free to recreate this design for personal use and limited sales but not for mass production. Permission to teach this pattern is exclusive to customers of The Beadsmith.