



Pebble Beaded Bead

The simplest beaded bead ever



Material (for one bead)

Matubo Nib-Bit (8 pcs)

Matubo Rulla (12 pcs)

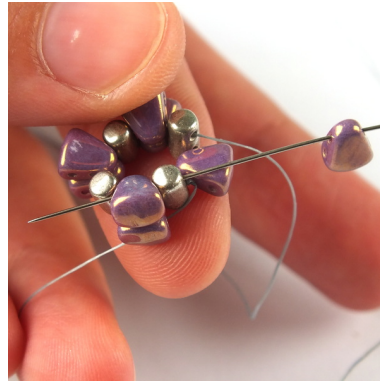
15/0 Japanese seed beads (8 pcs)

Beading needle and thread (Nymo, Fireline ...)

Difficulty: For beginners



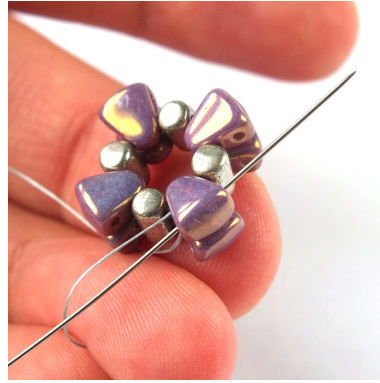
1) String one Rulla, one NB (narrow end), one Rulla, one NB (narrow end) ... total four of each.



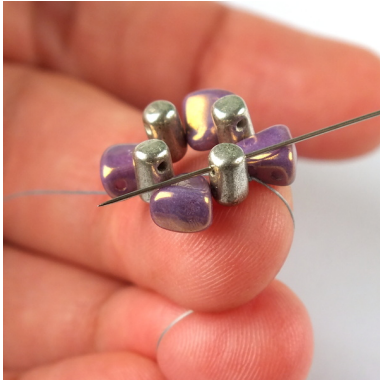
6) ... until you reach the end of the row. At the end of the row add one last NB, pass through the upper hole of the last Rulla and through the lower hole (narrow end) of the next NB.



2) Slide all the beads to the end of the thread and tie a square knot to form a circle. Make sure all the Rullas face the same direction.



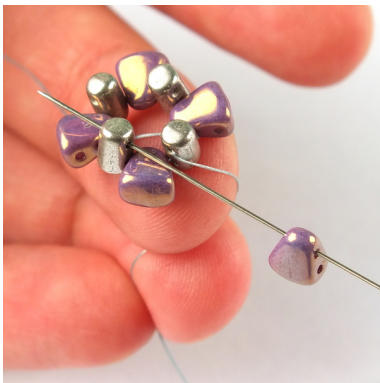
7) Pass back through the upper hole (wide end) of the same NB.



3) Pass through the upper hole of the nearest Rulla.



8) Add one Rulla, one 15/0 and one Rulla and pass through the upper hole (wide end) of the next NB in the row.



4) Add one NB (narrow end) and pass through the upper hole of the next Rulla.



9) Repeat step 8...



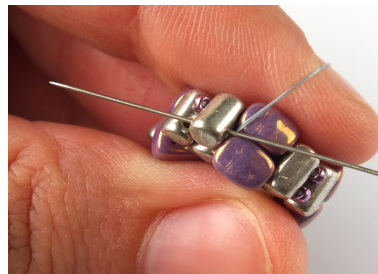
5) Repeat step 4...



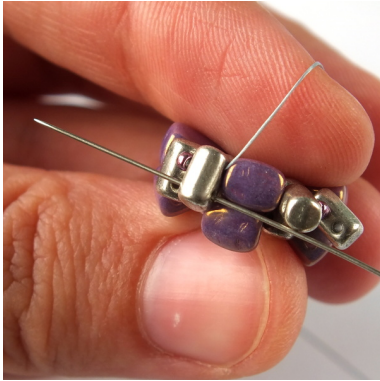
10) ... until you reach the end of the row.



11) At the end of the row pass through the first group of (Rulla, 15/0, Rulla).



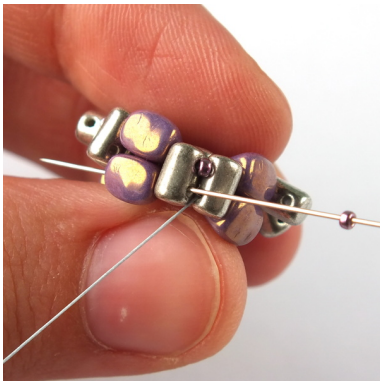
16) ... until you reach the end of the row.



12) And then pass back through the other hole of the same Rulla the thread is exiting from.



17) Tie a few half-hitch knots and cut off all the remaining thread.



13) Add one 15/0. Pass through the corresponding hole of the next Rulla and through the wide end of the nearest "free" NB (as shown in the photo)...



18) The bead is finished.

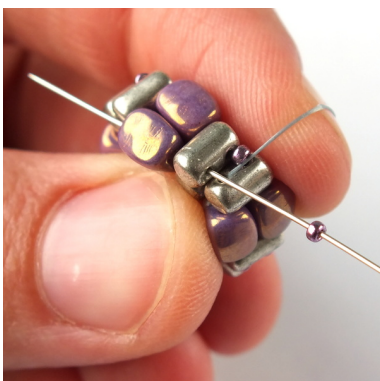


14) ... and through the free hole of the next Rulla.

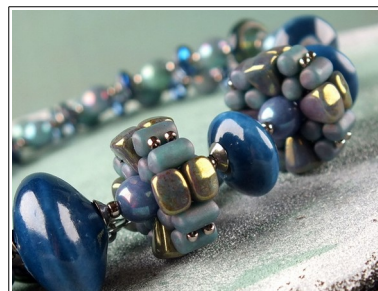
Colorways:



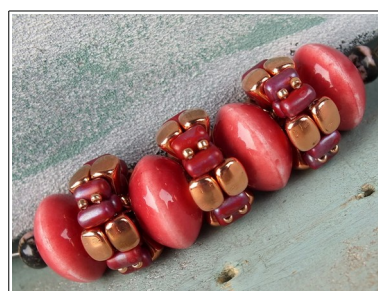
Matubo Nib-Bit 03000/14496
Matubo Rulla 23980/81002
15/0 Miyuki seed beads
4220 Duracoat Galv. Eggplant



15) Repeat steps 13 and 14...



Matubo Nib-Bit 63130/14495
Matubo Rulla 63130/85001
15/0 TOHO seed beads
711 Nickel



Matubo Nib-Bit 00030/39000
Matubo Rulla 93200/85001
15/0 TOHO seed beads
PF551 Permanent Finish Galvanized Rose Gold