



Gemma Bracelet

Quick and easy Swarovski Rivoli bezel with Matubo Miniduos



Material:

- Matubo Miniduo (approx. 5,5 grams)
- Matubo 8/0s (approx. 1,5 grams)
- 15/0 Japanese seed beads (approx. 0,5 gram)
- 11/0 Japanese seed beads (approx. 3 grams)
- 10mm (ss47) Swarovski Rivoli (5 pcs)
- Beading needle and thread (Nymo, Fireline)
- 4-6 mm beads of your choice (rounds, chips, rondelles ... 6 pcs)
- Eyepins, jump rings, a clasp

Difficulty: Intermediate



1) String one 11/0, three Miniduos, one 11/0, three Miniduos, one 11/0, three Miniduos, one 11/0 and three Miniduos (total 12 Miniduos and 4 11/0s).



6) Add seven 11/0s. Skip one 11/0 and pass through the second 11/0, Miniduo and another 11/0 (as shown in the photo).



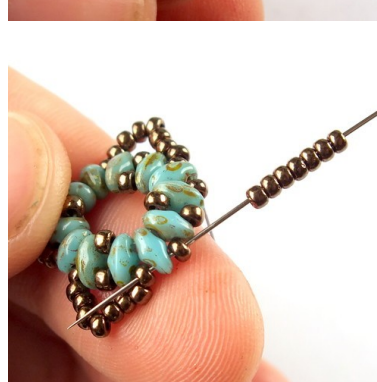
2) Slide all the beads to the end of the thread. Tie a square knot to form a circle. The pass through the upper hole of the nearest Miniduo.



7) Repeat step 6 ...



3) Add one 11/0 and pass through the upper hole of the next Miniduo.



8) Until you reach the end of the row.

4) Repeat step 3, until you reach the end of the row. Keep your tension tight.



9) Pass through the first four 11/0s from the first loop.



5) Pass through the next 11/0, Miniduo and 11/0 (the thread should exit from the 11/0 that comes after the "middle" Miniduo).

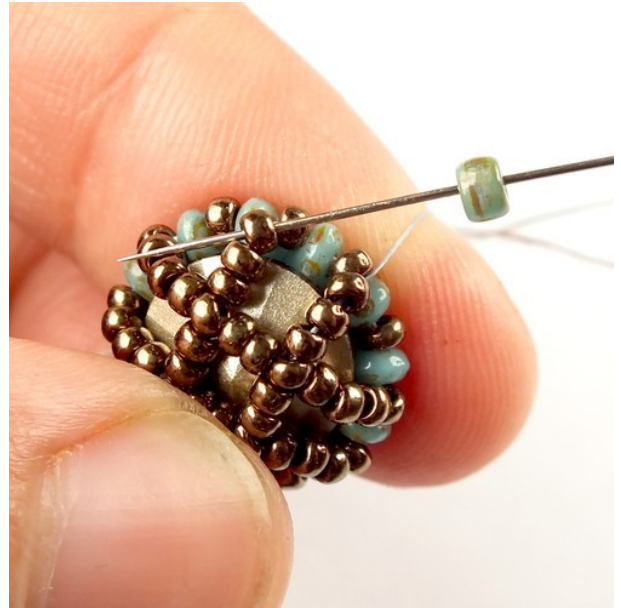


10) Add two 11/0s (if you use Chinese rivolis instead of Swarovski, just add one) and pass through the middle 11/0 from the next loop. Pull snug.



11) Repeat step 10 one more time ...

16) Add one 8/0 and go down through the corresponding 11/0 on the other side of the "narrow" gap.



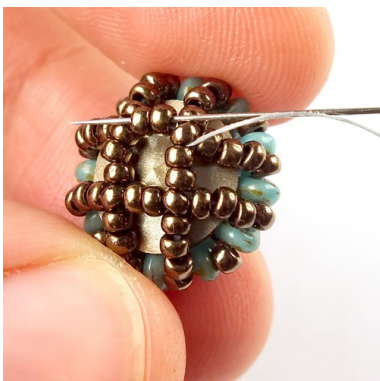
12) ... put the rivoli inside and then again, repeat step 10 ...



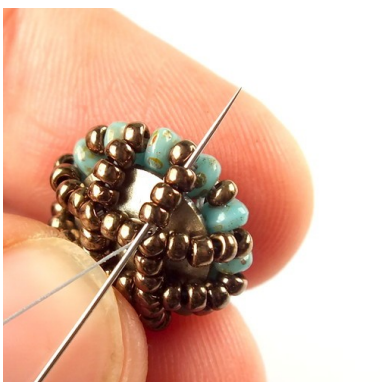
13) ... until you reach the end of the row.

Keep your tension as tight as possible.

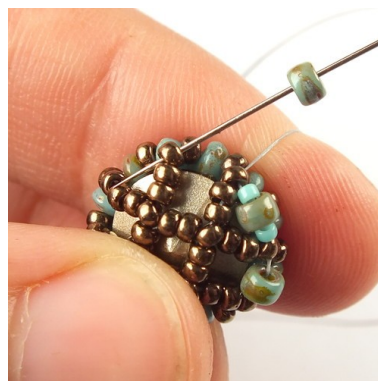
17) Add one 15/0, one 8/0 and one 15/0 and then go up through the corresponding 11/0 on the other side of the "wide" gap.



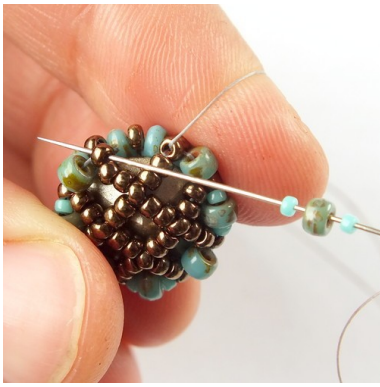
14) Weave through the last row few more times.



15) Pass through the nearest three 11/0s to get to the edge of the bezel - as shown in the photo.



18) Repeat steps 16 and 17 ...



19 ... until you reach the end of the row.



20) Weave through the last row at least one more time.



21) Tie a few half-hitch knots and cut off all the remaining thread.

22) Make another four (or more) of these components and connect them by jump rings and headpins to create a bracelet. Add a clasp of your choice.

