



## Claudia Beaded Bead

Two versions of rondelle-shaped beaded beads with Matubo Gemduo and Nib-Bit



### Material (for one bead):

- Matubo Gemduo (5 pcs)
- Matubo Nib-Bit (10 pcs)
- Matubo 8/0 (10 pcs)
- 11/0 Japanese seed beads (approx. 0.5 gram)
- 15/0 Japanese seed beads (approx. 1 gram)
- 12mm wooden or acrylic core bead
- 3mm firepolished beads (20 pcs) (optional)

Beading needle and thread (Nymo, Fireline)

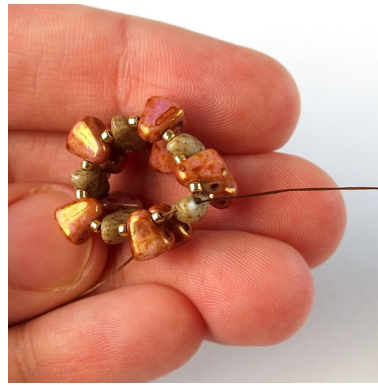
**Difficulty:** Intermediate





1) String one 15/0, one NB (narrow end), one 15/0 and one GD.

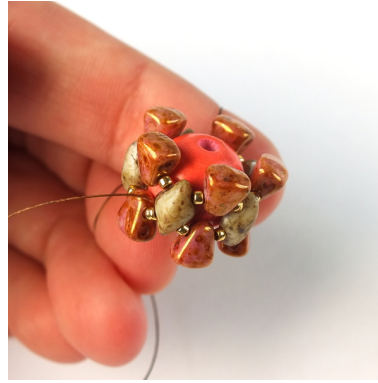
Repeat five times.



6) This is what you should get.



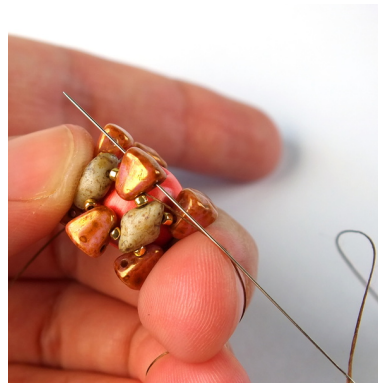
2) Slide all the beads to the end of the thread and tie a square knot to form a circle. Then pass through the upper hole of the nearest GD.



7) Put the core bead inside.



3) Add one 15/0, one NB and one 15/0 and pass through the upper hole of the next GD.



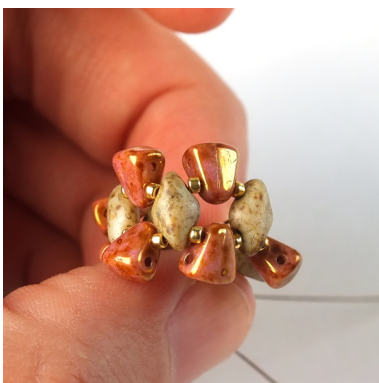
8) Weave through beads to get to the upper hole (wide end) of one of the NB beads.



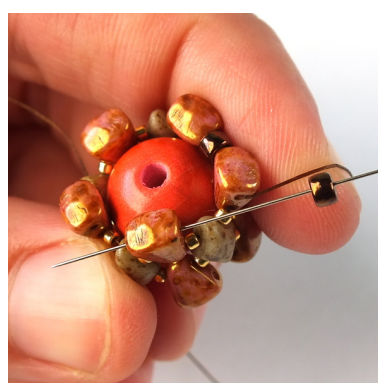
4) Repeat step 3, until you reach the end of the row.



9) Add one 8/0 and pass through the upper hole (wide end) of the next NB bead in the row.

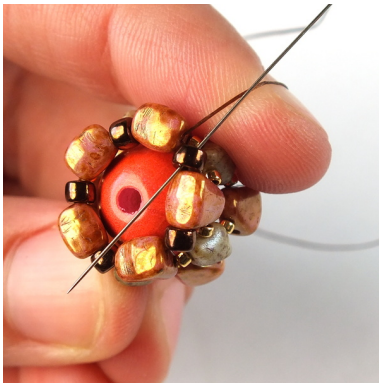


5) Keep you tension tight.

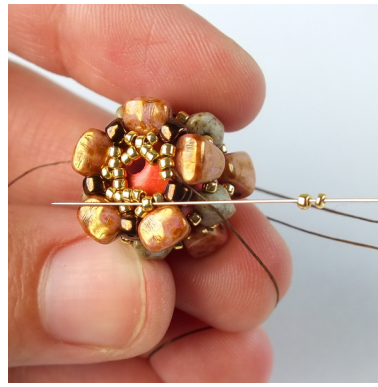


10) Repeat step 9, until you reach the end of the row.



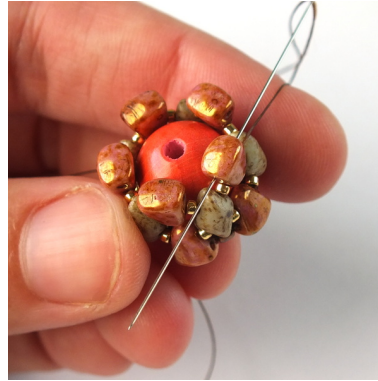


11) At the end of the row make the step-up by passing through the first 8/0 in the row.



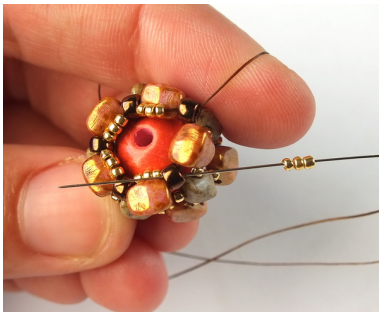
16) Repeat step 15, until you reach the end of the row.

12) Add three 15/0s and pass through the next 8/0 in the row. Pull snug and push the 15/0s inside.

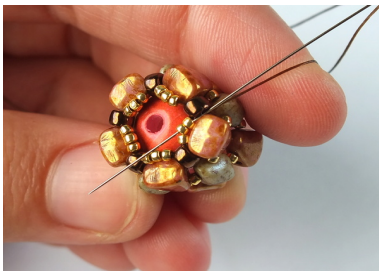
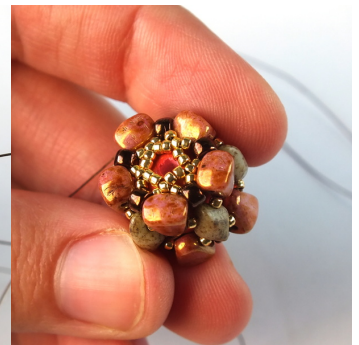


17) Weave through beads to get to the other side of the bead – the thread should exit from the upper hole of one of the NB beads.

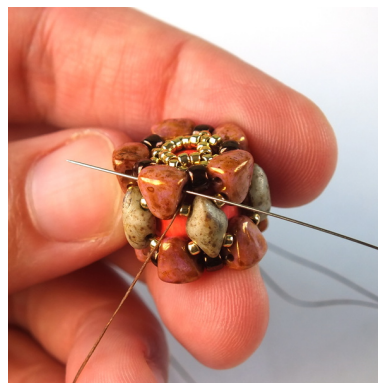
18) Repeat steps 9 – 16 on the other side of the bead.



13) Repeat step 12, until you reach the end of the row.



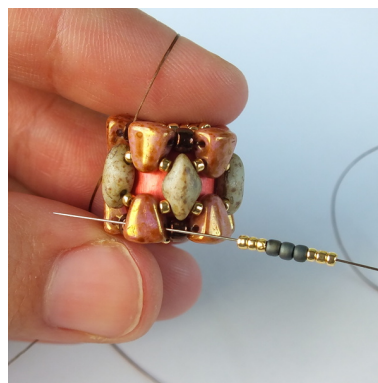
14) Make the step-up by passing through the first two 15/0s.



19) Weave through beads to get to the upper hole (wide end) of one of the NB beads.

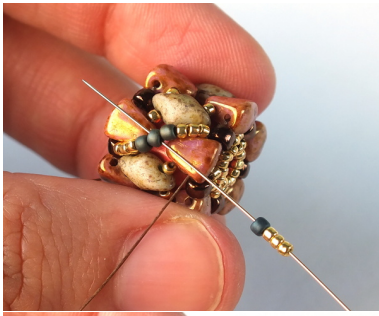


15) Add two 15/0s and pass through the "middle" 15/0 from the next group of three 15/0s.

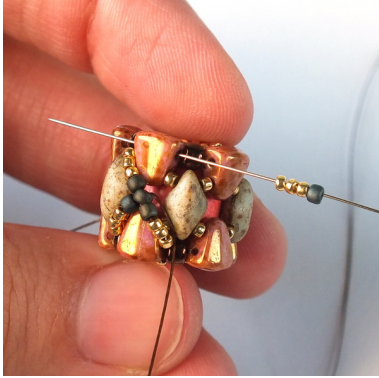


20) Add three 15/0s, three 11/0s and three 15/0s and pass through the wide end of the NB bead on the opposite side of the bead.

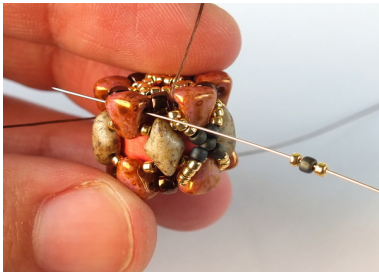




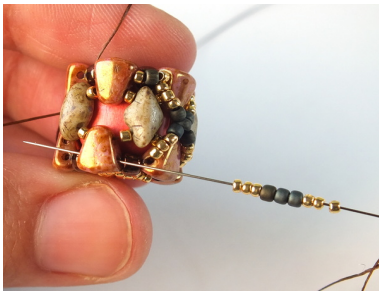
21) Add three 15/0s and one 11/0 and then pass through the "middle" 11/0 from the previous step.



22) Add one 11/0 and three 15/0s and pass through the upper hole (wide end) of the same NB you started from in step 20.



23) Add one 15/0, one 11/0 and one 15/0 and then pass through the upper hole (wide end) of the next NB bead.



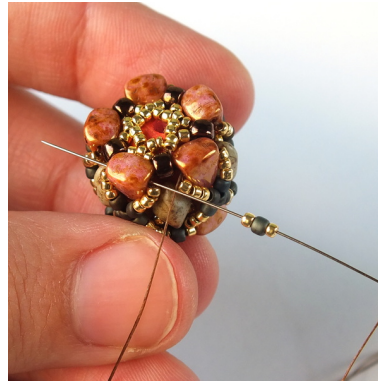
24) Repeat steps 20 - 23...



25) ... until you reach the end of the row.



26) Weave through beads to get to the other side of the bead. The thread should exit from the upper hole (wide end) of one of the NB beads.



27) Add one 15/0, one 11/0 and one 15/0 and pass through the upper hole (wide end) of the next NB bead.

Repeat until you reach the end of the row.



28) The first layer of embellishment is finished.

### 2<sup>nd</sup> layer embellishment - version with seed beads



29) Pass through the nearest group of (15/0, 11/0, 15/0).



30) Then pass through the next three 15/0s.

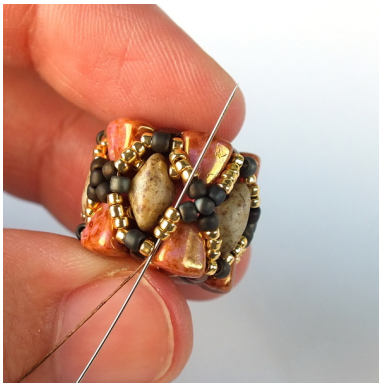


31) Add one 11/0 and pass through the next three 15/0s.

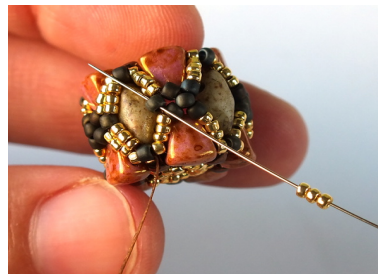


32) Pass through the next (15/0, 11/0, 15/0)...





33) ... and through the next three 15/0s.



38) Add three 15/0s and pass through the nearest "new" 11/0.



34) Add one 11/0 and pass through the next three 15/0s.



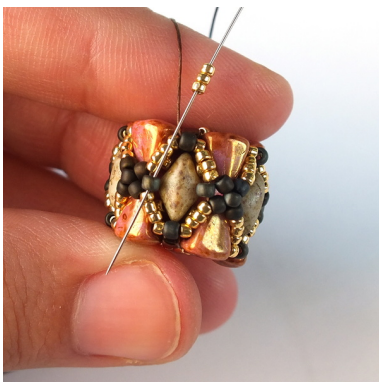
39) Add three 15/0s and pass through the middle 11/0 and through the next 15/0 from the next group of (15/0, 11/0, 15/0).



35) Pass through the next 15/0 and 11/0.



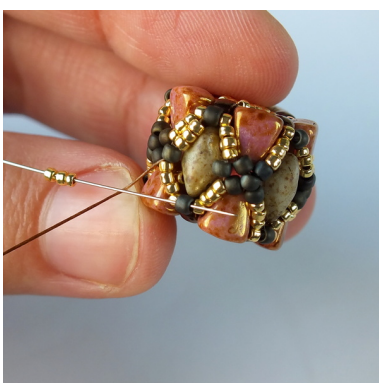
40) This is what you should get.



36) Add three 15/0s and pass through the nearest "new" 11/0.



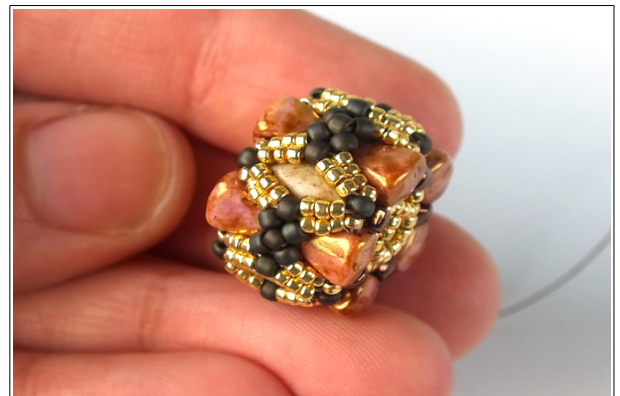
41) Weave through the upper hole (wide end) of the next NB and through to the next group of (15/0, 11/0, 15/0).



37) Add three 15/0s and pass through the middle 11/0 from the next group of (15/0, 11/0, 15/0).

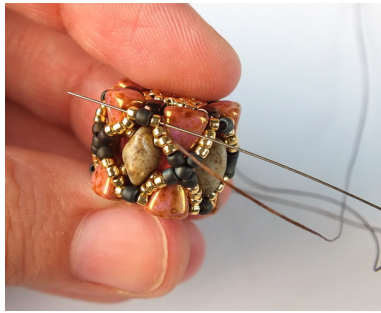


42) Repeat steps 30 - 41, until the entire bead is decorated. Tie a few half-hitch knots and cut off all the remaining thread. The bead is finished.





2<sup>nd</sup> layer embellishment – version with firepolished beads



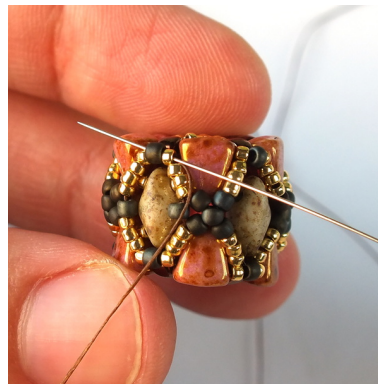
29b) Pass through the nearest group of (15/0, 11/0, 15/0).



34b) Add one 11/0 and pass through the next three 15/0s.



30b) Then pass through the next three 15/0s.



35b) Pass through the next 15/0 and 11/0.



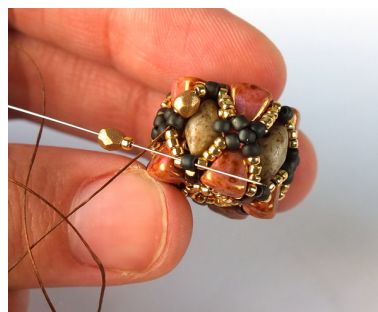
31b) Add one 11/0 and pass through the next three 15/0s.



36b) Add one 15/0 and one FP and then pass through the next new 11/0.



32b) Pass through the next (15/0, 11/0, 15/0)...



37b) Add one FP and one 15/0 and pass through the middle 11/0 from the next group of (15/0, 11/0, 15/0).



33b) ... and through the next three 15/0s.



38b) Add one 15/0 and one FP and then pass through the next new 11/0.



39b) Add one FP and one 15/0 and pass through the middle 11/0 and through the next 15/0 from the next group of (15/0, 11/0, 15/0).



40b) Weave through the upper hole (wide end) of the next NB and through to the next group of (15/0, 11/0, 15/0).

Repeat steps 30b - 40b, until the entire bead is decorated.  
Tie a few half-hitch knots and cut off all the remaining thread. The bead is finished.



## Colorways:



Matubo Gemduo 03000/85455  
Matubo Nib-Bit 63030/43400  
Matubo 8/0 61100/81800  
11/0 TOHO seed beads  
PF558 Permanent Finish  
Galvanized Aluminium  
15/0 TOHO seed beads  
2604F Semi Glazed Turquoise  
3mm FP 61100



Matubo Gemduo 03000/85455  
Matubo Nib-Bit 03000/65491  
Matubo 8/0 23980/14415  
11/0 TOHO seed beads  
614 Matte Color Iris Brown  
15/0 TOHO seed beads  
PF557 Permanent Finish  
Galvanized Starlight  
3mm FP 02010/10710