

*Design by Helena Chmelíková*

**PRECIOSA Rocailles**

331 19 001; 10/0; 8/0



**PRECIOSA Drops**

331 11 001; 2/0



*Preciosa Ornela introduces beads and seed beads  
from the PRECIOSA Traditional Czech Beads™ brand.*

Preciosa-Ornela.com



TRADITIONAL  
CZECH BEADS

CHRISTMAS PENDANT MADE FROM PRECIOSA BEADS AND SEED BEADS

# Merry Christmas reindeer

PRECIOSA

# Merry Christmas reindeer

Brighten up the pre-Christmas period and make a happy reindeer using beads and seed beads from the PRECIOSA Traditional Czech Beads™ brand to give to your friends and loved ones. Use the seed beads from the PRECIOSA PermaLux collection to make a Christmas reindeer as a small gift for somebody you love. We wish you a beautiful, colorful Christmas.

## Materials and tools:

### PRECIOSA Rocailles (R10)

331 19 001; 10/0;  
22022 grey; 44x (R1)



331 19 001; 10/0;  
22008 wildberry red; 30x (R2)



331 19 001; 10/0;  
22007 brown; 30x (R3)



331 19 001; 8/0;  
22008 wildberry red; 2x (R8)



### PRECIOSA Drops (D)

331 11 001; 2/0;  
22008 wildberry red; 2x



### PRECIOSA Imitation Pearls (IP)

131 19 001; 12 mm;  
70444 imitation grey matt; 1x



### PRECIOSA Pressed Beads (PB)

111 01 333; 7,5 x 10 mm;  
02010/15496 marble; 1x



- a long eye pin (for example 40 – 50 mm);  
And end piece with a crimp ending;  
a 4 mm ring; a carabiner



- a 0.20 mm nylon line; a nylon thread  
(L104-0002, red, 0.11 mm); a thin needle;  
scissors; needle nose pliers;

snipping pliers; flat nose pliers; a ruler;  
a 0.5 mm cord; heavy paper (a small piece)



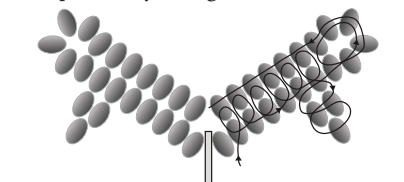
Difficulty: ●●●●●

Technique: sewing, stringing, eye pin linking

## Procedure:

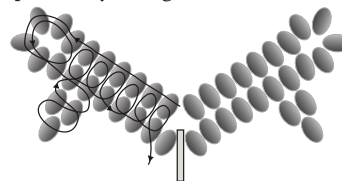
### The antlers

Step 1:  
Use the line. Start by stringing 2x R1.  
Thread the line through the 1<sup>st</sup> R1 one more time. Repeat this of 5 more times (a total of 6x). String 3x R1. Thread the line through the 1<sup>st</sup> and 2<sup>nd</sup> R1. Thread the line through 2 earlier strung R1. Thread the line through 2 earlier strung R1. String 6x R1. Thread the line through them one more time. Thread the line through the 6 previously strung R1.



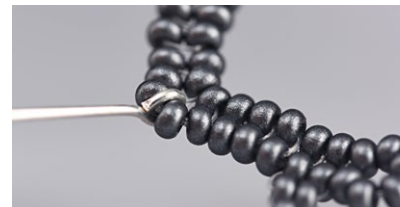
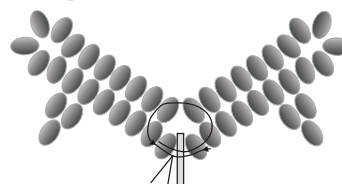
## Step 2:

String 12x R1. Thread the line through the last 6 R1 one more time. String 5x R1. Thread the line through the last 2 one more time. Thread the line through the 1<sup>st</sup> R1 of the 5 strung R1. Connect it with 1x R1. Also connect the adjacent R1 with the previously strung R1. String 1x R1 4 times and always connect it with the previously strung R1.



## Step 3:

String 1x R1 onto both ends of the line. Thread the lines through the eye of the eye pin in the direction towards one another. Thread the end of the line with the needle in a circle through 6x beads. Tie off the ends and pull them into the R1.



## The arms

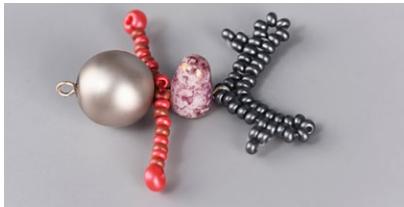
### Step 4:

Use the nylon thread. Alternate the R2 and R3. String 9x R10 and 1xs R8. Thread the line back through 8x R10. Thread the line through the 9<sup>th</sup> R10 from the side (from above, it turns on its side). Alternately string 10x R10 and 1x R8. Thread the line back through 8x R1. Thread the line through the 9<sup>th</sup> R10 from the side. String 1x R10. A circle of 4x R10 will form in the middle. Thread the line through them one more time. Tie off the ends with three knots. Pull them into the R10 and cut them off.



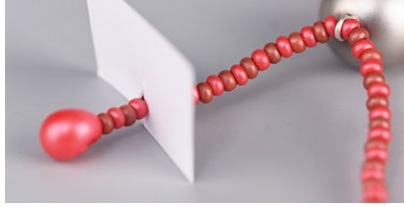
### The body

Step 5:  
Put 1x PB for the head, the arms (through the central ring made of 4x R10) and the 1x IP for the belly onto the eye pin. Shorten the protruding wire to 8-10 mm. Grasp the ends of the wire between the points of the needle nose pliers. Twist it around the points. Close the eye. Gently twist the wire back along the edge of the IP. The eye will be centrally placed above the IP hole.



### The legs

Step 6:  
Use the nylon thread. Alternate R2 and R3. String 20x R10 and 1x D. Thread the line back through the 20 R10. Thread the line through the eye on the eye pin. String 20x R10 and 1x D. Thread the line back through the 20x R10. Thread the line through eye of the needle. Prepare a piece of thick paper and cut a slit in it. Slide the slit onto one leg. The legs will be gently positioned when finished. Tie off the ends of the thread with three knots. Pull them into the R10 and cut them off.



### The pendant

Step 7:  
Cut off about 15 cm of thread. Pull both ends through the hole in the middle of the antlers. Pull on the ends. A loop will be created on the other end. Thread the end of the cord into it. Pull the thread with the cord through the centre of the antlers. Measure off 8 cm of cord. Place the ends into the cavity in the metal end pieces. Crimp the first using the flat nose pliers. Then crimp the second. Use a ring to attach the carabiner.

