



CHANDELIER EARRINGS

By LESLIE ROGALSKI

www.leslierogalski-beadworks.com

The word “chandelier” is often used to describe larger, eye-catching designs, and aptly suits these elegant earrings.

More color ideas included!

8 Ginko beads
24 Paisley Duos
12 GemDuos
3g size 11 seed beads
3g size 8 seed beads
Fireline or beading thread to blend in
#12 beading needles
Scissors or thread zap
2 closed jump rings
2 open jump rings
2 earring findings/wires

Skill level: Advanced Beginner

Techniques to know: Ending and adding thread, making half hitch knots



TIPS

- Check all holes to make sure they are clear before using multi-holed beads.
- Follow the stitching direction shown in the illustrations for ease in following this tutorial. It is helpful to orient your work the same way as shown in the illustrations.
- Repeat thread paths for firm stitches. Only one path is shown in illustrations for clarity.

Please respect my designs by not reselling or altering my patterns in any way.
Do not replace or modify text, images, names, logos, or URLs. Feel free to recreate this design for personal use and limited sales but not for mass production or online.

FIGURE 1

Step 1. On a 1.25 yd of thread string a GemDuo and an 8° six times (counterclockwise as shown in the illustration) leaving a 3-inch tail. Keep all the GemDuos facing up. Knot the tail and working thread. Sew through the beads again, and exit a GemDuo. Reverse direction and sew through the outer GemDuo hole. Thread the tail on a new needle, weave in to secure and trim.

FIGURE 2

Step 2. String an 11°, a Paisley Duo through the tip concave side, a Paisley Duo through the tip convex side, and an 11°. Sew through the next GemDuo. Repeat five more times for a total of six pair of Paisley Duo. Sew through all beads again to firm things up. Exit through the first Paisley Duo strung to be between a pair of Paisley Duos. Reverse direction and sew through the Paisley Duo wide convex end.

NOTE: Figure 2 shows that you are at the bottom of the earring in progress.

FIGURE 3

Step 3. (Figure 3a-b) String an 8° and sew through the next Paisley Duo. String an 8° and sew through the next Paisley Duo. String an 11° and sew through the next Paisley Duo. String a Ginko through the tip end. String three 11°s and sew through the Ginko hole wide end. Sew through the next Paisley Duo, and pull the Ginko and 11°s snug to the pair of Paisley Duos. String an 8° and sew through the next Paisley Duo. (You are at the top of the earring.) String a Ginko tip end and an 11°, an 8° and an 11°. Sew through the Ginko wide end and through the next Paisley Duo. Snug beads and thread as you go.

Step 4. (Figure 3b-c) String an 8° and sew through the next Paisley Duo. String a Ginko tip end and three 11°s. Sew through the Ginko wide end and through the next Paisley Duo. String an 11° and sew through the next Paisley Duo. String an 8° and sew through the next Paisley Duo. String an 8° and sew through the next Paisley Duo. String a Ginko through the tip. String an 11°, an 8°, and an 11°. Sew through the Ginko hole wide end.

Step 5. (Figure 3 red thread) Sew through the next Paisley, 8°, Paisley, 8°, Paisley, and Ginko tip end. Sew through all the beads in this step again to firm things up. (Second pass is not shown in illustration.) Sew out through the end 11° on the Ginko.

FIGURE 4

Step 6. String an 8° and sew back through Ginko wide end, the next Paisley and 11°. String five 11°s. Loop around the Paisley Duo and sew through the next 8°, Paisley Duo, and 8°. String seven 11°s. Sew through the first 11° and 8° below the bottom Ginko. String three 8°s and sew through all four 8°s again (forming a RAW unit). Sew through the next 11°.

Please respect my designs by not reselling or altering my patterns in any way.

Do not replace or modify text, images, names, logos, or URLs. Feel free to recreate this design for personal use and limited sales but not for mass production or online.

FIGURE 5

Step 7. (Figure 5a-b) String seven 11°s and sew through the next 8°, Paisley Duo, and 8°. String five 11°s. Loop around the Paisley Duo and sew through the next 11°. Sew through the next Paisley Duo and through the Ginko tip end. String an 8° and sew through the three 11°s on top of that Ginko.

Step 8. (Figure 5b-c) String an 8° and four 11°s. Loop around the Paisley Duo and sew through the next 8°. Sew through the next Paisley and out the top Ginko. Sew through the first 11° and 8° atop the Ginko. String three 8°s and sew through the 8°s again, exiting the top 8°.

FIGURE 6

Step 9. String a closed jump ring and sew through the top 8°. Sew again through the ring and top 8° (only one pass shown), through the next two 8°s and an 11°. Pull the thread snug.

FIGURE 7

Step 10. Sew through the Ginko, next Paisley, and 8°. String four 11°s and an 8°. Sew through the three 11°s and 8° on the next Ginko. Sew through the Ginko and next Paisley. Secure the thread in the beadwork and trim. Use an open jump ring to attach your ear wire finding to the closed ring.

Follow Steps 1-10 to make your second earring.

Leslie Rogalski (also known as Sleepless Beader) is the creative director for The Beadsmith and a Beadsmith Inspiration Squad designer. She has been an editor for leading bead magazines, a Swarovski ambassador, and a designer for several bead companies. Widely recognized for videos and TV appearances in the US and UK, Leslie is also a Master Artisan of her local chapter of the Pennsylvania Guild of Craftsmen. To see more of her work and her tutorials visit leslierogalskibeadworks.com, the Beadsmith online web site of patterns, and find her online class Essential Seed Bead Techniques on craftsy.com.

CHANDELIER EARRING ILLUSTRATIONS

FIGURE 1

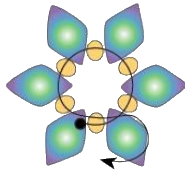


FIGURE 2

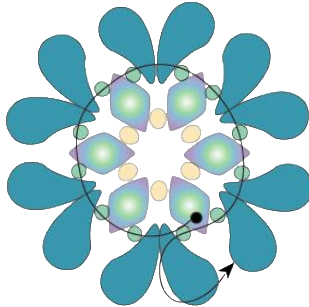


FIGURE 3

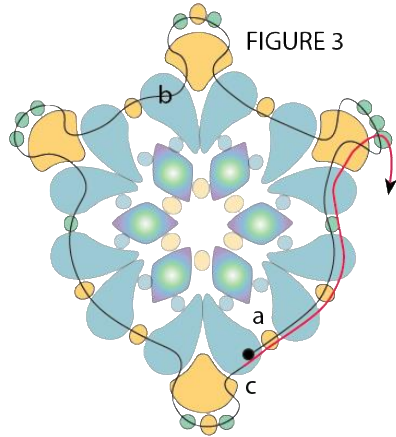


FIGURE 4

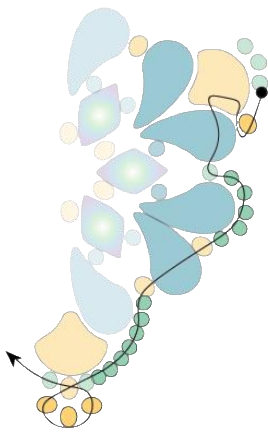


FIGURE 5

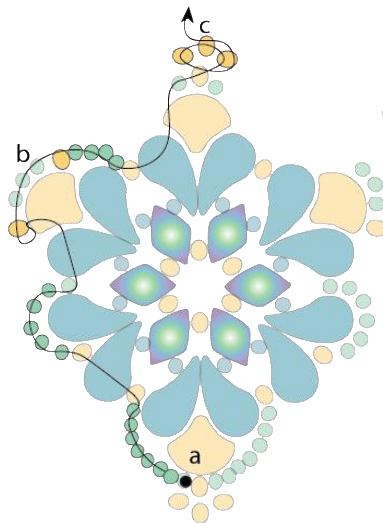


FIGURE 6

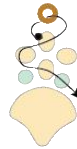
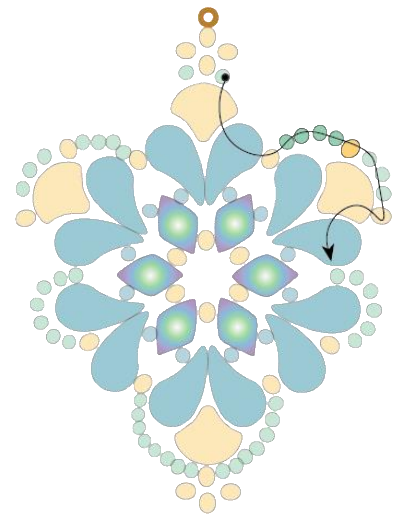


FIGURE 7



Please respect my designs by not reselling or altering my patterns in any way.
Do not replace or modify text, images, names, logos, or URLs. Feel free to recreate this design for personal use
and limited sales but not for mass production or online.



GLEAM



IRIS

GOLD (Top)

PAISLEY DUO Crystal Gleam Copper Glaze
 GEMDUOS Backlit Crystal
 GINKO Bronze Pale Gold
 11/0 Galvanized Champagne
 8/0 Ivory Ceylon

BLUE (Bottom)

PAISLEY DUO Crystal Gleam Blue Glaze
 GEMDUOS Tropical Blue Grape
 GINKOS Jet Blue Sun Batik
 11/0 Galvanized Duracoat Mermaid Blue
 8/0 Duracoat S/L Navy Blue

GREEN (Left)

PAISLEY DUO Crystal Gleam White Glaze
 GEMDUOS Crystal Gleam Green Glaze
 GINKO Metallic Suede Lt. Green
 11/0 Seafoam Green Luster
 8/0 Matte Teal AB

RED (Right)

PAISLEY DUO Crystal Gleam Red Glaze
 GEMDUOS Crystal Gleam Copper Glaze
 GINKO Chatoyant Shimmer red wine
 11/0 Matte black
 8/0 Garnet Gold Luster

BROWN ORANGE (Top)

PAISLEY DUO Jet Brown Iris
 GEMDUOS Jet Brown Iris
 GINKO Jet Brown Iris
 11/0 Round Frost Op Rainbow Glaze Cardinal
 11/0 Round Frost Op Rainbow Glaze Pistachio
 8/0 Round Frost Op Rainbow Glaze Cardinal

BLUE RED (Right)

PAISLEY DUO Jet Rainbow Iris Matte
 GEMDUOS Jet Rainbow Iris Matte
 GINKO Jet Rainbow Iris Matte
 11/0 Duracoat Galvanized Mermaid Blue
 8/0 Round Frost Op Rainbow Glaze Dk Red

PURPLE GREEN (Left)

PAISLEY DUO Jet Green Iris
 GEMDUOS Jet Green Iris
 GINKO Jet Green Iris Matte
 11/0 Duracoat Galvanize Dk Lilac
 8/0 Tr Chartreuse

Please respect my designs by not reselling or altering my patterns in any way.
 Do not replace or modify text, images, names, logos, or URLs. Feel free to recreate this design for personal use
 and limited sales but not for mass production or online.