



Carbon Bracelet

Try the new Matubo 11/0s and make this stunning, elegant bracelet and matching earrings



Material (for one bracelet):

- Matubo Nib-Bit (approx. 36 pcs)
- Matubo 11/0 (approx. 3 grams)
- Matubo 8/0 (2 pcs)
- 15/0 Japanese seed beads (approx. 0,5 gram)
- Jump rings, a clasp

Bonus – earrings with rivolis

- 12mm Matubo or Swarovski Rivoli (2 pcs)
- Matubo Nib-Bit (16 pcs)
- Matubo 11/0 (approx. 1 gram)
- Matubo 8/0 (8 pcs)
- 15/0 Japanese seed beads (16 pcs)
- Jump rings, earring components

Beading needle and thread (Nymo, Fireline)

Difficulty: For beginners/intermediate



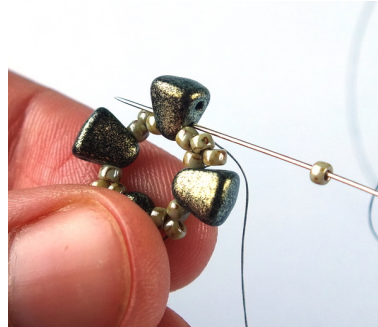
1) String one NB (narrow end) and two 11/0s. Repeat four times. Slide all the beads to the end of the thread and tie a square knot to form a circle.



6) Add one 11/0 and pass through the next 11/0 from the previous row.



2) Pass through the lower hole of the nearest NB and through the next 11/0.



7) Add one 11/0 and pass through the lower hole of the next NB bead.



3) Add one 11/0 and pass through the next 11/0, through the lower hole of the next NB and through another 11/0.



8) Repeat steps 6 and 7 ...



4) Repeat step 3 ...



9) ... until you reach the end of the row. At the end of the row add one last 11/0, pass through the lower hole of the last NB bead ...



5) ... until you reach the end of the row. At the end of the row add one last 11/0 and then pass through the last 11/0 and the lower hole of the last NB.



10) ... and then make the step-up by passing through the first 11/0 you added in the last row.



11) Add three 11/0s and pass through the next 11/0, upper hole of the next NB bead ...



16) Pull snug.



12) ... and through the next 11/0.



17) Pass through the nearest two 15/0s, lower hole (wide end) of the new NB bead and then back through the upper hole (narrow end) of the same NB.



13) Repeat steps 11 and 12 ...

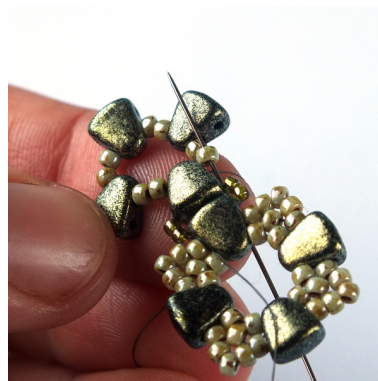
18) Add two 11/0s, one NB (narrow end), two 11/0s, one NB (narrow end), two 11/0s, one NB (narrow end) and two 11/0s, then pass through the upper hole (narrow end) of the same NB the thread is exiting from.



14) ... until you reach the end of the row. At the end of the row add the last three 11/0s and pass through the last 11/0 and through the upper hole of the last NB.



15) Add two 15/0s, one NB (wide end) and two 15/0s and pass through the upper hole (wide end) of the same NB bead the thread is exiting from.

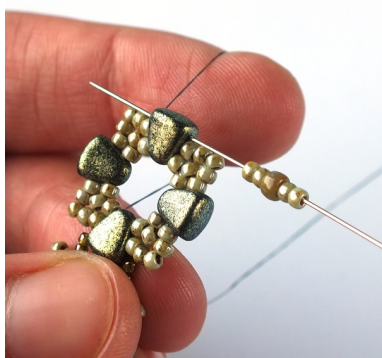


19) Pass through the nearest new 11/0 ...

20) ... and then finish the new unit - like in steps 3 - 14.



21) Keep adding new units by repeating steps 15 - 20, until you reach the desired length of a bracelet (one unit is approximately 2 centimeters long). I usually make 9 units in one bracelet, which gives the total length of approx. 18 centimeters (without the clasp).



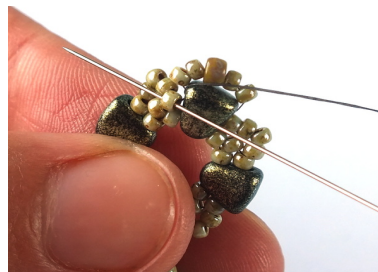
22) The thread is exiting from the upper hole of the last NB from the last unit of a bracelet.

Add two 11/0s, one 8/0 and two 11/0s and pass through the upper hole of the same

NB the thread is exiting from.



23) Pull snug.



24) Pass through the next 11/0 in the last unit.

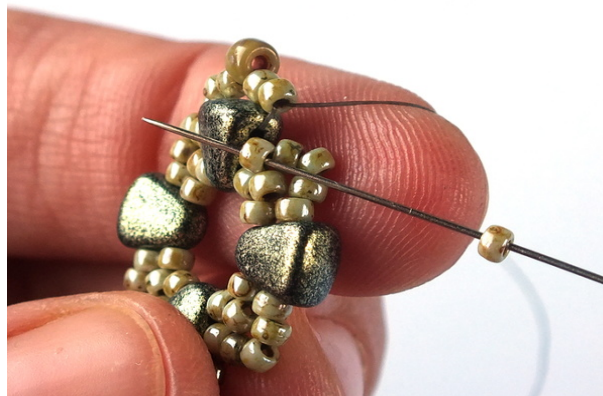


25) Add one 11/0 and pass through the nearest two new 11/0s.



26) Skip the 8/0 and pass through the next two 11/0s. Pull snug.

27) Add one 11/0 and pass through the nearest 11/0 (as shown in the photo).





28) This is how the end of the bracelet should look like. Optionally you can weave through the loop few more times.

29) Weave through beads to get to the 11/0 in the corner of the last square (as shown in the photo).



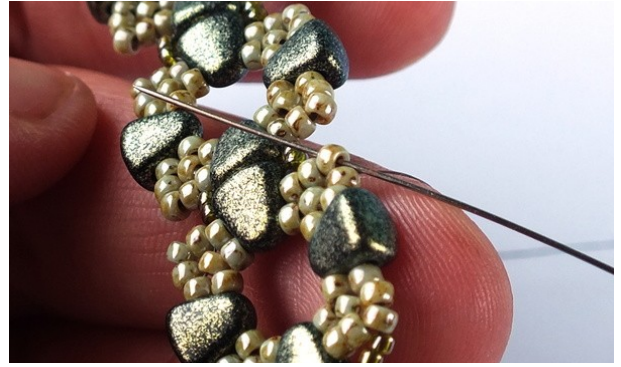
30) Add two 15/0s and pass through the nearest two 15/0s.



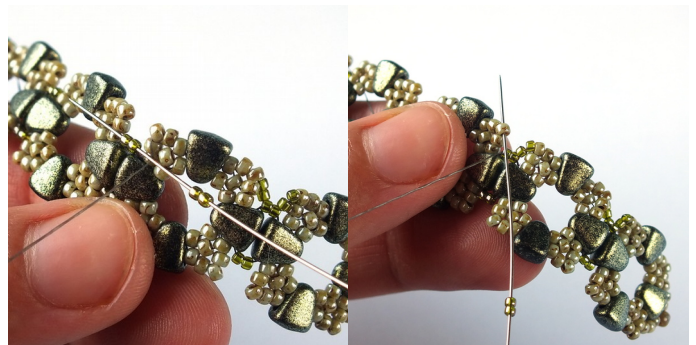
31) Add two 15/0s and pass through the 11/0 in the corner of the next square.



32) Weave through beads to the next corner of the same square.



33) Repeat steps 30 - 32, until you reach the end of the bracelet.



34) When you reach the end of the bracelet, make another loop above the last NB bead (like in steps 22 - 28).



35) And then repeat steps 29 - 33 on the other side of the bracelet.



Tip: If two 15/0s are not enough and there is some visible thread between beads in steps 30 - 35, try using one 11/0 and one 15/0 instead.



36) The bracelet is finished. Tie a few half-hitch knots and cut off all the remaining thread.



37) Use jump rings to attach a clasp to the 8/0 beads on the ends of the bracelet.

4) Now let's connect the two squares together: The thread is exiting from the first 11/0 from the last row on the new square. Add one 11/0 and pass through the 8/0 from the first square.



Bonus - earrings with rivolis

1) Make a square like in steps 1 - 14.



There is only one small difference - in steps 11 - 14, do not add three 11/0s, but one 11/0, one 8/0 and one 11/0.

2) When the square is finished, tie a few half-hitch knots and cut off all the remaining thread.



3) Start making another square by repeating steps 1 - 10.



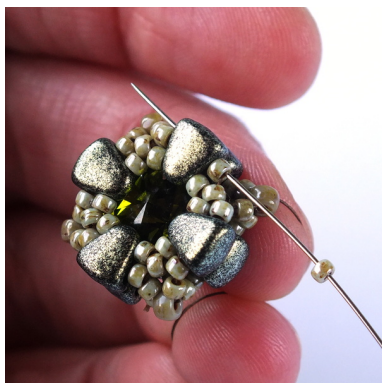
5) Add one 11/0 and pass through the next 11/0 from the previous row, upper hole of the next NB bead ...



6) ... and through the next 11/0 (all on the new square).



7) Repeat steps 4 - 6 ...

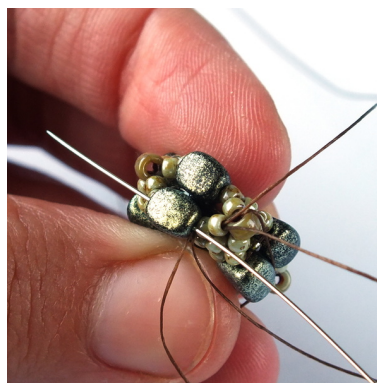


8) ... until you reach the end of the row. Before you close the last corner, put the rivoli inside. The thread should be exiting from the upper hole of the NB bead.

9) Add one 15/0 and pass back through the upper hole (wide end) of the next NB bead.



10) Add one 15/0 and pass through the same NB you started from in the previous step.



11) Move to another side of the square and connect the two NB beads there in the same way as in steps 9 and 10.

Repeat on all four sides of the earring.

12) Tie a few half-hitch knots and cut off all the remaining thread. Make the second earring. Then attach earring components to the 8/0 beads in the corner.



Colorways:



Light green

Matubo Nib-Bit 23980/94107

Matubo 11/0 03000/65455

Matubo 8/0 43020/86805

15/0 TOHO Seed Beads 457 Gold-Lustered Green Tea

Dark green

Matubo Nib-Bit 83120/85001

Matubo 11/0 23980/14495

Matubo 8/0 50230/85106

15/0 Miyuki Seed Beads 2033 Matte Met Lt Olive

Steel/Hematite

Matubo Nib-Bit 00030/37000

Matubo 11/0 23980/13702

Matubo 8/0 23980

15/0 TOHO Seed Beads 711 Nickel