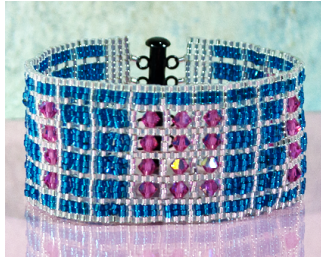




CRYSTAL CUFF

Design, Text and Graphics by:
Paul C. Ricks, copyright: 2010, 2014
Difficulty Level: Advanced



Materials Required: Delica Beads (2 colors – Accent (A) and Main Color (MC)), 4mm Bicone Swarovski crystals (approx. 28)

NOTE: A black line indicates the thread path you have taken in a previous step(s); a red line indicates the thread path you are to take in the current step.

STEP 1: Set your loom to appropriate length and warp with 14 warp threads. Loom one row with 23 Accent color (A) Delica beads. See figure 1 below: NOTE BEAD PLACEMENT BETWEEN WARP THREADS.

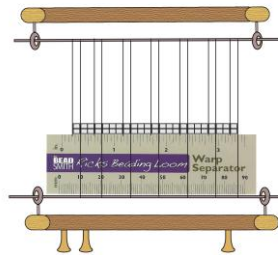


Fig. 1

STEP 2: Remove the warp separator card and repeat step one at least three more times. This is where you can make some adjustment in the size of the bracelet, these instructions are for a bracelet that will fit a 6 3/4" wrist. For a larger size, add more rows to this end and the same number of A rows to the other end. See figure 2 below:

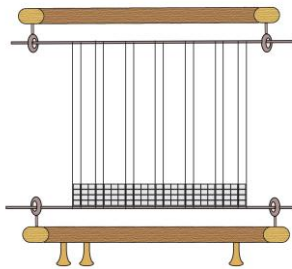


Fig. 2

STEP 3: String one A bead; two Main Color (MC); one A; three MC; one A; three MC; one A; three MC; one A; three MC; one A; two MC and one A. Loom this row placing one A bead between warps 1 & 2; two MC between warps 2 & 3, one A between warps 3 & 4; three MC between warps 4 & 5; one A between warps 5 & 6; three MC between warps 6 & 7; one A between warps 7 & 8; three MC between warps 8 & 9; one A between warps 9 & 10; three MC between warps 10 & 11; one A between warps 11 & 12; two MC between warps 12 & 13 and one A between warps 13 & 14 as in Figure 3 below:

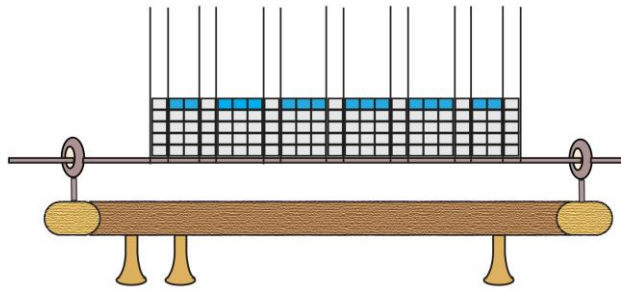


Fig. 3

STEP 4: String one A and two MC beads. Place the A bead between warps 1 & 2 and the MC beads between warps 2 & 3. Pass your needle through the A bead between warps 3 & 4 in the previous row. I find this easier to do if I bring my needle up between warps 3 & 4, pass through the A bead and bring my needle back down between warps 3 & 4 again. Remember, you MUST keep your weft thread UNDER the warps when going from left to right! See figure 4 below:

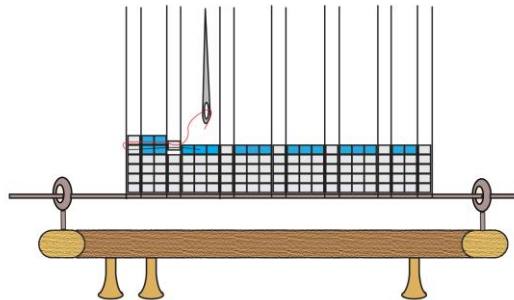


Fig. 4

STEP 5: String three MC beads and pass your needle through the next A bead in the previous row. Repeat three more times for the next three groups of three MC beads. See figures 5, 5a, 5b & 5c below:

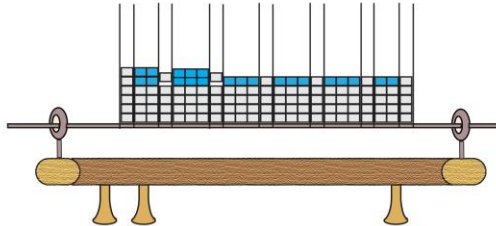


Fig. 5

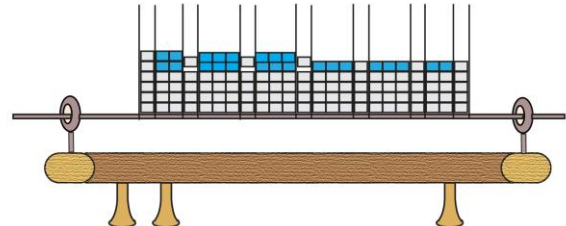


Fig. 5a

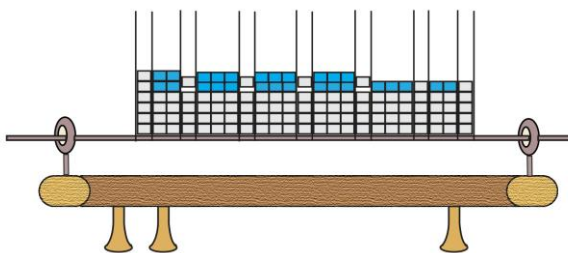


Fig. 5b

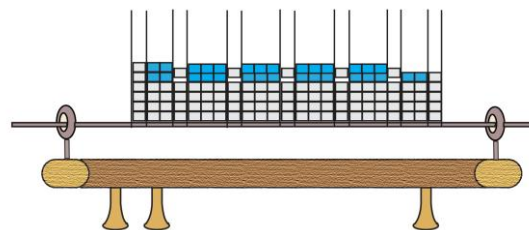


Fig. 5c

STEP 6: String two MC and one A bead. Place the two MC beads between warps 12 & 13 and the one A bead between warps 13 & 14. Loom back over all the warp threads following the same thread path you took in steps 4 & 5 (i.e. through the beads just strung, through the A beads in the previous rows, etc.) Notice how the A bead in the row below pulls up to position itself halfway between the previous row and the current row. This is correct. See figure 6 below:

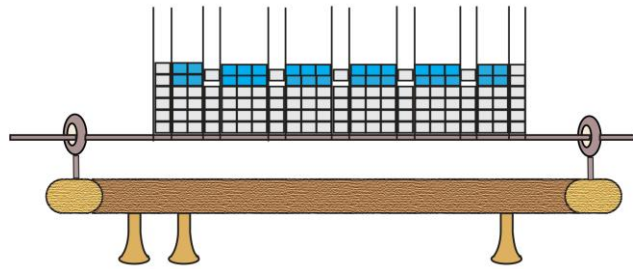


Fig. 6

STEP 7: Repeat steps 3 through 6 one more time. See figure 7 below:

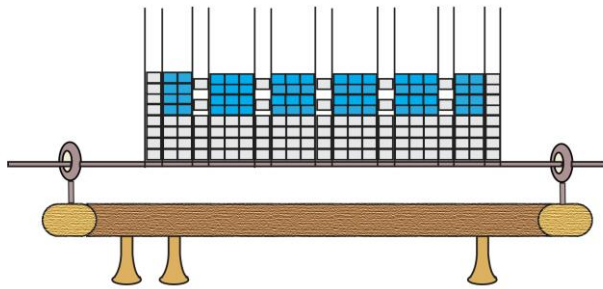


Fig. 7

STEP 8: Loom one row of 23 A beads as in step one above. See figure 8 below:

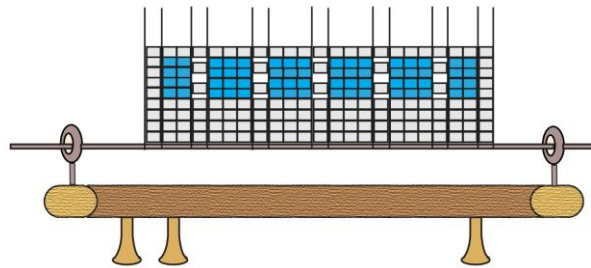


Fig. 8

STEP 9: Repeat steps 3 through 8 for another set of MC blocks. See figure 9 below:

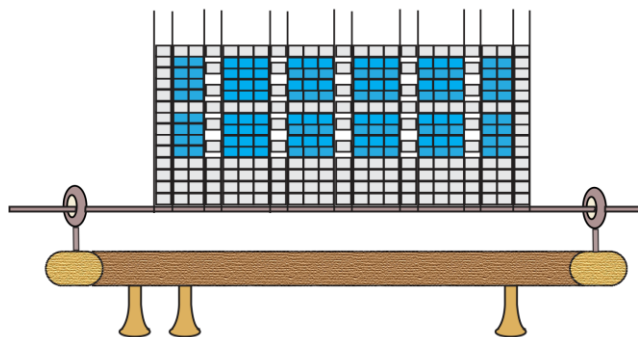


Fig. 9

STEP 10: String one A; two MC and one A beads. Place one A bead between warps 1 & 2; two MC beads between warps 2 & 3 and one A bead between warps 3 & 4. Pass your needle through the next three A beads in the preceding row. See figure 10 below:

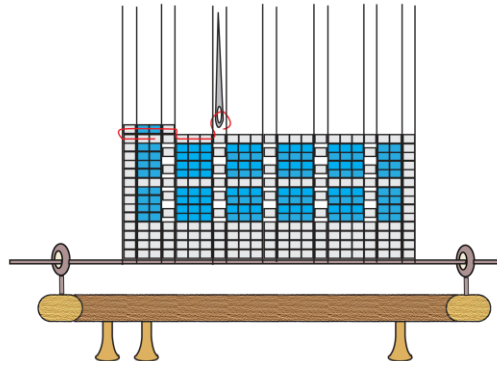


Fig. 10

Step 11: String one A bead. Place this A bead between warps 5 & 6. Needle through the next three A beads in the preceding row. See figure 11 below:

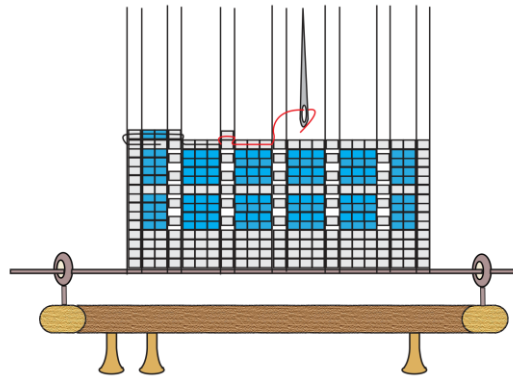


Fig. 11

STEP 12: Repeat step 11 two more time so that your project looks like figure 12 below:

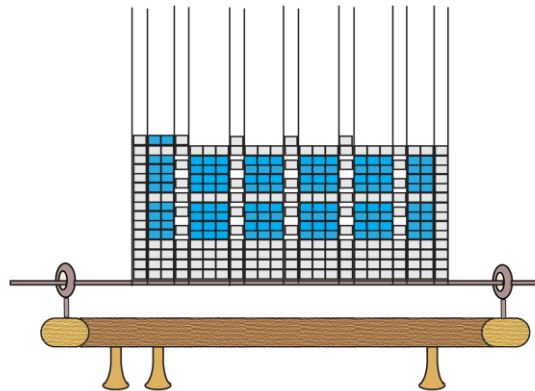


Fig. 12

STEP 13: String one A bead; two MC beads and one A bead. Place the first A bead between warps 11 & 12; the two MC beads between warps 12 & 13 and the second A bead between warps 13 & 14 as shown in figure 13 below. Loom back through the beads added in step 12 and this step, following the same thread path (i.e. through the beads just added, through the three A beads in the previous row, etc.) See figure 13 below:

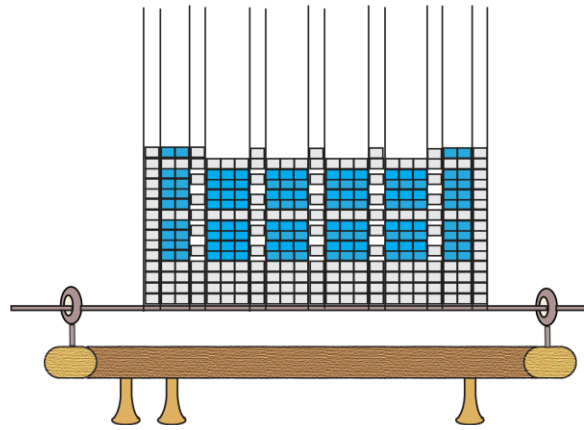


Fig. 13

STEP 14: String one A bead; two MC beads; one A bead; one crystal; one A bead; one crystal; one A bead; one crystal; one A bead; one crystal; one A bead; two MC beads and one A bead. Place one A bead between warps 1 & 2; two MC beads between warps 2 & 3; one A bead between warps 3 & 4; one crystal between warps 4 & 5; one A bead between warps 5 & 6; one crystal between warps 6 & 7; one A bead between warps 7 & 8; one crystal between warps 8 & 9; one A bead between warps 9 & 10; one crystal between warps 10 & 11; one A bead between warps 11 & 12; two MC beads between warps 12 & 13 and one A bead between warps 13 & 14. Loom back through these beads as normal. See figure 14 below:

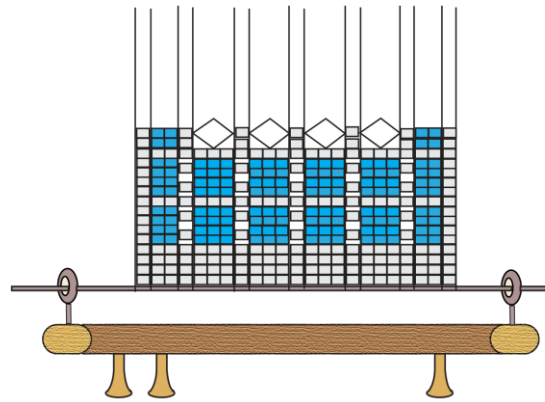


Fig. 14

STEP 15: String one A bead; two MC beads and one A bead. Place the first A bead between warps 1 & 2, the two MC beads between warps 2 & 3 and the second A bead between warps 3 & 4. Needle through the first crystal in the preceding row. String one A bead between warps 5 & 6 and needle through the next crystal in the preceding row. Do this with two more A beads. String one A bead; two MC beads and one A bead. Loom back through all the beads just added, following the same thread path you just took over the warp threads. See figure 15 below:

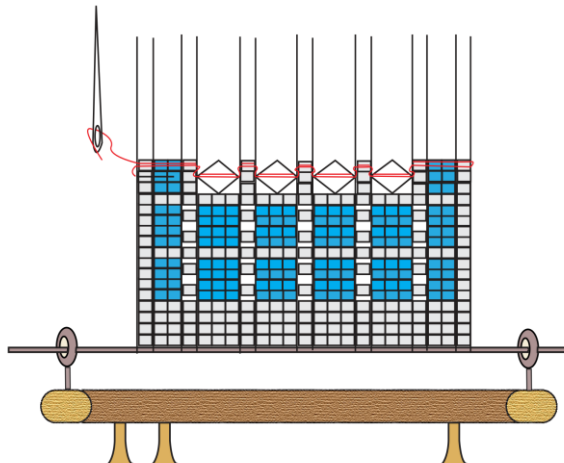


Fig. 15

STEP 16: String 23 A beads and loom these beads as in step one above. See figure 16 below:

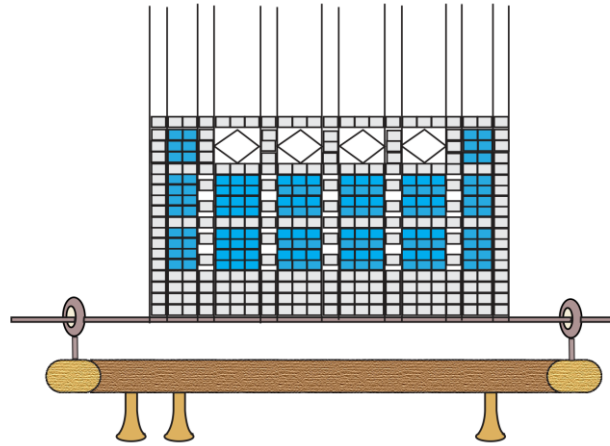


Fig. 16

Step 17: Repeat steps 3 through 16.

STEP 18: Center Crystal Rows: Repeat steps 10 through 16 so that your project looks like figure 18 below. NOTE: This is an opportunity to increase the length of your bracelet by approximately 1/4 inch. To this, just add one more row of crystals to this center portion.

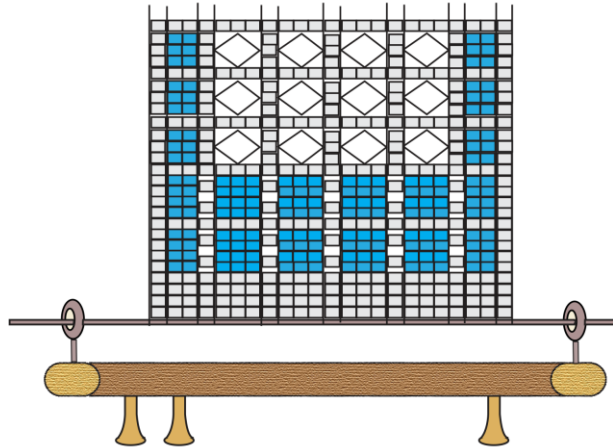


Fig. 18

STEP 19: Complete the other end of your bracelet by repeating steps 3 through 16 two more times and steps 3 through 8 one more time. Then add rows of A beads the same number of times that you did in steps one and two at the beginning of the project.

STEP 20: Add clasp of choice.