



Bubble Bracelet

Make this stunning circular design with new Matubo NIB-BIT beads



Material (for one bracelet):

Matubo NIB-BIT (approx. 70 - 100 pcs)

Matubo 8/0 (2 pcs)

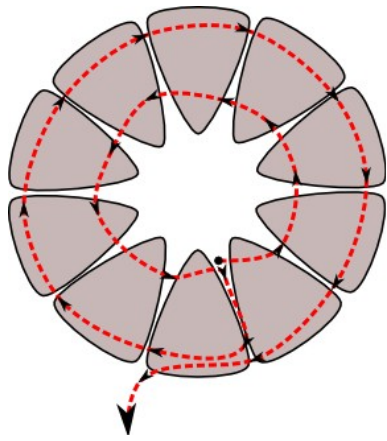
11/0 Japanese seed beads (approx. 1 gram)

Jump rings

Clasp

Beading needle and thread (Fireline)

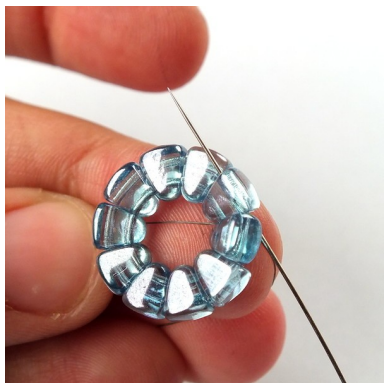
Difficulty: For beginners



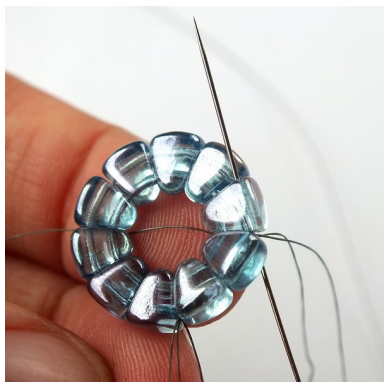
1) String 10 NIB-BIT beads (through the narrow side).



2) Slide all the beads to the end of the thread and tie a square knot to form a circle.



3) Pass through the upper hole of the nearest NIB-BIT.

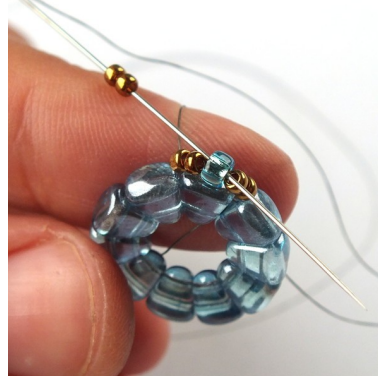


4) Weave through all the upper holes of all the NIB-BIT beads. Keep your tension very tight.

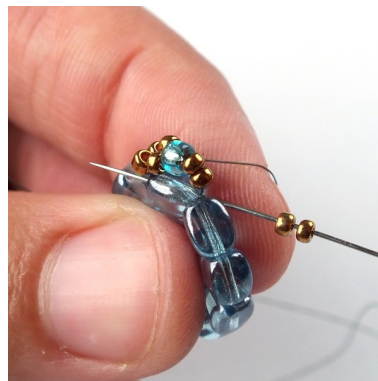
Now let's make a small loop we will later use for attaching a clasp.



5) The thread exits from the upper hole of one of the NIB-BIT beads. Add two 11/0s, one 8/0 and two 11/0s and pass through the same hole of the same NIB-BIT bead the thread is exiting from.



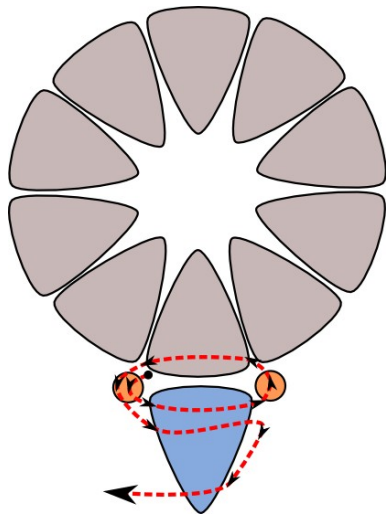
6) Add two 11/0s and pass through the 8/0 bead you added in the previous step.



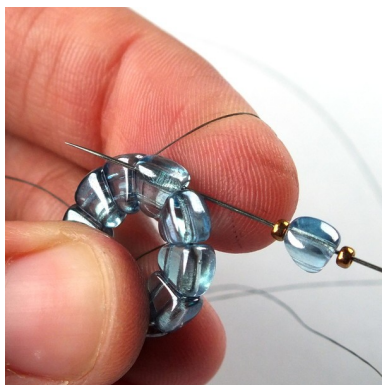
7) Add two 11/0s and pass through the same hole of the same NIB-BIT bead from step 5. Optionally you can weave through this loop few more times.



8) Weave through beads to get to the upper hole of the NIB-BIT bead on the opposite side of the circle.



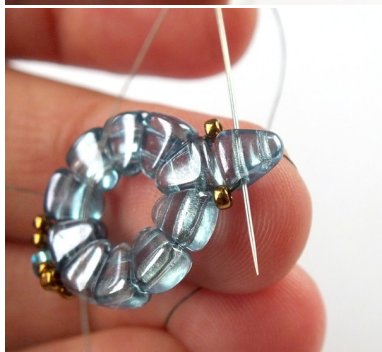
9) Add one 11/0, one NIB-BIT (through the wide side) and one 11/0. Then pass through the same hole of the same NIB-BIT bead the thread is exiting from. Pull snug.



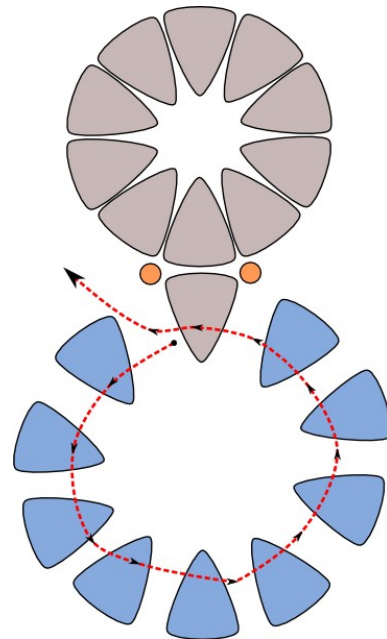
10) Optionally you can weave through the new beads few more times.



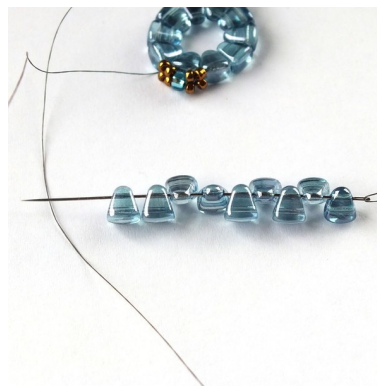
11) Get to the lower hole (the wide side) of the new NIB-BIT bead.



12) ... and then pass back through the other hole of the same bead.



13) Now let's add another circle. There are 10 NIB-BIT beads in each circle. We already have one NIB-BIT bead in place, so add nine more (string them through the narrow side) ...

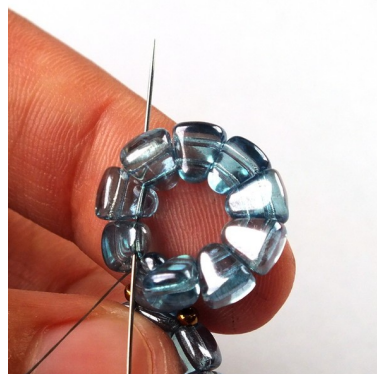


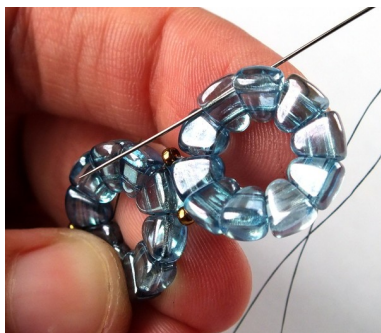
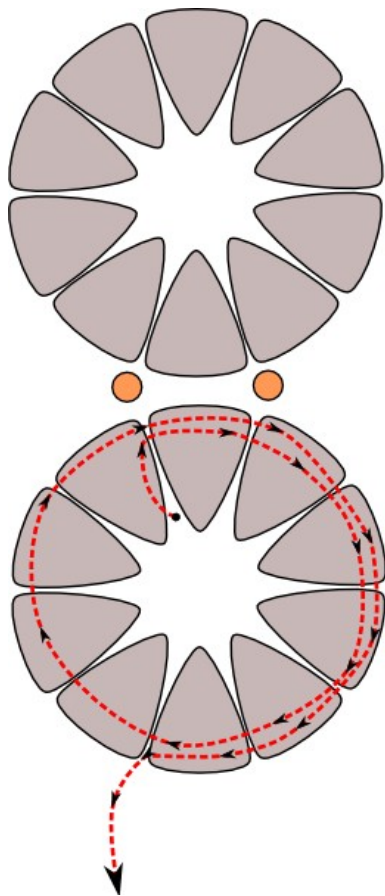
14) ... and then pass through the same hole of the same bead the thread was exiting from in step 12.



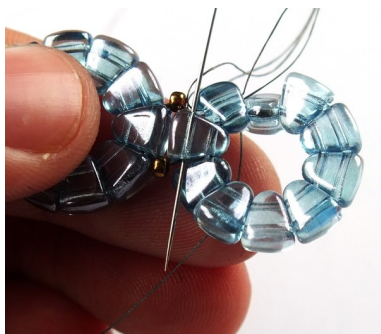
15) Pull snug. A new circle will form.

For better tension, you can weave through all the lower holes of all the NIB-BIT beads in the new circle.





16) Then pass back through the upper hole of the same NIB-BIT bead the thread is exiting from ...



17) ... and then weave through the upper holes of all the 10 NIB-BIT beads in the new circle.

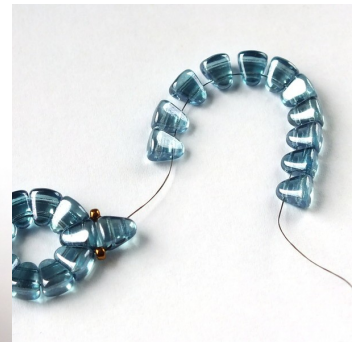


18) Then get to the NIB-BIT bead on the other end of the circle ...

19) Keep adding new circles by repeating steps 9 - 18.



20) Until now, we have always been making small circles (from 10 beads), but we can also make bigger circles - from 12 beads. Add the first bead (like in steps 9-11), pass back through the "upper" hole of the new bead (like in step 12) and then add eleven more beads and finish the circle (like in steps 14 - 18).



21) In your bracelet you can just put one large circle in the middle (like I did in this blue bracelet) or make one small, one large, one small ... (like the pink bracelet on the front

page of the tutorial).



22) Keep adding new circles, until you reach the desired length of the bracelet.



23) On the last circle make the same beaded loop as on the first one (steps 5-7). Then tie a few half-hitch knots and cut off all the remaining thread.



24) Use jump rings to attach a clasp to the 8/0 beads on both ends of the bracelet.

25) The bracelet is finished.



Red bracelet:
NIB-BIT 00030/14495
TOHO 11/0 Gold-Lustered Montana Blue TR11-204
Matubo 8/0 00030/14495



Blue bracelet:
NIB-BIT 00030/14464
Miyuki Round 11/0 457 Metallic Dark Bronze
Matubo 8/0 60020/81800